



If you don't get a license, we have Vouchers at a very reasonable cost most of the time. You can hunt either mule deer, elk or both, it's your choice. We have Free Ranging and Estate Elk available, Bulls and Cows. We also have great free ranging guided hunts with meals and lodging for Great Mule Deer Hunting. If you have a point you can draw a Mule Deer License.







(A Frame Lodge 3000 private acres to hunt Semi-Guided.)



*Tent Camp*



*High Country Tent Camp*



(Hunt "5" "Moose Cabin" is a Private Cabin, 4 hunters, your own 500 acres with a pond and unlimited National Forest on the East edge of the private Property)

Hunt ID: CO-5025 -Deer Elk and Exotics

Get a leftover drawing license with zero preference points. Find out how here:

[Colorado Quick Picks Lives Here.](#)

This outfitter caters to the **DIY/ Semi-Guided hunter** while using private land and affordable pricing.

In today's world this is unique and extremely difficult to find because a rancher can make much larger profits by having a guide and increasing the price \$ 1500-\$ 2500 per hunter. This makes it beyond difficult to locate any of these and this one fills extremely quick each season as the availability shows with many booking dates a year in advance.

With lots of land with deer and elk but some better for elk than deer and others better for deer than elk there is a great mixture here for the hunter.

As a definition of DIY and Semi guided look to the following:

### **DIY**

DIY(Do It Yourself) is defined as going to the property with no guidance as to animals and their watering, Feeding and bedding areas.

### **\*Semi-Guided**

Semi-Guided is defined as you are contacted at the property. The contact is the outfitter, guide, Landowner or other knowledgeable person that know the property and its intricate details. This person Provides you with the important property boundary lines, where the animal are watering, Feeding and bedding. Also, where they are normally seen. If there is a cabin or lodging, they will instruct on the use of the facilities and provide a cell or other phone number to call for any questions later. Different from Guided is that when Saturday morning comes you will be going out hunting without them.

In Truth we don't do DIY hunts although many people are familiar with the terms so we use it to difference from guided and we use the same pricing for DIY but we require the provider to meet our Semi-Guided requirements. We try to make it similar as if you came a week early for a day of "pre-scouting", which would not be possible because of the long distance our hunters travel for our

successful hunts. We Don't DO ANY DIY HUNTS BECAUSE WE WANT TO MAKE THE HUNTERS NO MATTER WHAT THEIR SKILL AND GAME KNOWLEDGE IS AT THE TIME. WE WANT OUR HUNTERS TO BE SUCCESSFUL AND WANT TO DO EVERYTHING POSSIBLE TO MAKE THAT HAPPEN. We provide that at a DIY Hunt price as a gesture of our commitment.

The Elk can be drawn any season for bull or cow. For deer there is a 60% of drawing with 0 points. In this case the outfitter has vouchers if needed and we also have the [Colorado Quick Picks Program](#) that allows you to try for a license with a \$20 registration fee, and only \$100 if we get one for you. This is much better than paying \$1500-\$3000 for a Landowner voucher to be able to get as license.

These hunts are all semi-Guided. The exception is the river bottom property for deer which is guided due to the locations being so close to other private land. If you want to hunt deer also you may, if you need a voucher to buy a deer license, he has a couple of \$ 2500 deer vouchers for only \$ 995 to hunt this area only.

- 1<sup>st</sup> season is Either sex elk only
- 2<sup>nd</sup> season is elk bull or cow defined and deer with deer Vouchers available
- 3<sup>rd</sup> season is elk bull or cow defined and deer with deer Vouchers available
- 4<sup>th</sup> is Either sex elk

2<sup>nd</sup> and 3<sup>rd</sup> season you may have a bull and cow or Buck Deer license (Buck uplift removed if you buy a Voucher) in your pocket so you can shoot both with only \$ 500 upcharge for the hunt. The 2<sup>nd</sup> and 3<sup>rd</sup> season are 4-day hunts of a 9-day season. The day between the 1<sup>st</sup> half and the 2<sup>nd</sup> half is a transition day. The group in the hunt may hunt until 10:00 am but out of the property by noon. The 2<sup>nd</sup> half hunters arrive after 2 pm and can hunt that afternoon and for the duration of the season. For example, the first day is a Saturday with the first group hunting Saturday, Sunday, Monday, Tuesday and Wednesday Morning.

The second group coming in Wednesday morning and hunting Wednesday, Thursday, Friday and Saturday and Sunday.

Kit is a good time to mention that the first season, in mid October some elk have moved in, and more so if a good snowstorm has pushed them in. Since we can't predict the weather the outfitter has decided to not book anyone for any hunt during the 1<sup>st</sup> and let the deer and even more so the elk density during that time and begin hunting on the 2<sup>nd</sup> season when he knows that elk are on the property no matter what the weather has been.

This works well in this area because during that time of the year deer and elk are local and others migrating from their summer range to their winter range. They may not be there 1 day, except for the locals and the migrants be there the next day. Weather is the key for elk movement and their exposure to hunters. Deer are migrating by the moon, so they are much more tied to the "Human Calendar." Keep in mind that deer migration will be accelerated or retarded by the immediate weather conditions to some degree.

In both animal's bad weather requires them to leave their blue bird weather safety concealed area and move for food and migration. This GMU has hundreds of thousands of individual elk or deer so each one gauges the urgency for food shelter and migration. This habitat is good for them all year so they could be anywhere at any time. The above details the "Average animals" mind set. No one shoots the "Average animal" we all shoot the individual and his mindset may make him an easy target when another may feel the weather and time of the year don't require the movement and related exposure to hunters. There is one thing that seems to be the standard rule is deer and elk hunting and this one you can take to the bank. The worse the weather the better the hunting provided you can cover the country to see theses moving animals as much as possible or be on a position where you can cover moving animals. These areas in a prime migration corridor. This adds to the migration movement you will be seeing. I animal you see today may be have been 5 miles away yesterday. Remember they can travel at night very easily if they feel it is needed. Many of your larger animals do this as a standard when the hunter pressure is on.

This has a lot to do with the more movement in the morning and evening. In addition, if they do travel at night their mid 24-hour calendar has the up and move some at around noon each day so you never know when they will show up. If the weather is bad enough, they can lay in one place for 12-24 hours. They have no schedule like us to get up every morning at 6 am to go to work. What it amounts to is the have about 3 months to travel around 50 miles from summer range to winter range. They can stay in the same area all day or move 5 miles in one day. The only thing guaranteed is that all 365 days of a year they must be somewhere. If that is where you are located, he comes home with you. If it isn't, he may show up tomorrow.

Keep in mind that an ATV motor running around this and any area does spook elk and deer out of your area it is not a "Normal" noise except for during hunting season because we leave these areas alone as much as possible throughout the year. We recommend that you not bring one unless you use it just to retrieve down animals and use it during the mid-day to no lower the animal density in the area you hunt.



Colorado warm falls and lack of the traditional elk migration has changed a lot of hunters into looking for other options. The elk migration hunts require you wait at lower altitudes for the snow to push the elk down to the lower altitudes where the access is better, and the trees are fewer. Many of the place's elk winter are treeless rolling sage brush hills with high elk concentration holding herds of 100 to 1000 elk is not unusual. The harvest rate skyrockets, and you can many times drive right up to the location that you put down your elk and after gutting 4-5 men can load it whole in the back of your truck. That is all great and worked for years as the norm for late season migration hunts.

All hunts are DIY/Semi guided on private land in this great wildlife areas. You arrive on the day before your hunt, then the outfitter or guide will show you area and give up all the tips and hints for success to hunt the area successfully and advise you of any fences or property line boundaries that you must be aware of during your hunt. In the hunts that you have private adjacent to national forest you are high on a string of mountains where the public land hunters will be pushing elk or deer to you but they seldom if ever get to where you are located because of the distance uphill they would be forced to walk to get there. Elk and deer have an emergency mechanism that if they are spooked or followed, they will go up hill to elude their enemy. You are uphill from any public land hunters.

Now you know as much as I do after hunting both animals for over 50 years in multiple states with around 60 elk kills and twice that many deer kill. They are great animals with a great challenge, but remember each one is an individual, like you and me with their own mind set that determines their actions. There are many, many shot each year and their young are born to replace them. There population continues to grow each year and the odds of you seeing them improves every year. The better you are at hunting skills and the more time you spend in the field rather than in bead or an arm chair the more successful you will be.

---

## Hunt Options

---

### Detail for each of the Favored Hunts Numbers 1-4

---

#### **Hunt #1 Colorado Elk Drop Camp with ATV access**

There is a 2 tent and a small cooking building at the edge of 3000 acres of private on a 40 acre parcel and a 60 acre "Honey Hole" where a game camera showed hundreds of pictures of elk, deer and black

bear. You hunt the 100 acres and thousands of acres of difficult to access public land just above it. The elk travel in and out of the private land and into the national forest for rut, migration and just because they can. We call this a Drop camp because you ride in on an ATV to your camp, yours or ours. There is where you hunt for the 4 days. (Best for elk but there are Deer as well.)

There is a small cabin, but I have convinced the landowner to also put up a deluxe tend in a drop camp configuration with tent, cots and the like. The cabin has propane and. The ATV tent "Drop Camp" for 2-4 hunters provides everything that the small cabin doesn't. 4-8 can also fit in this camp.)

This is a semi-guided hunt in that you will be taken to a pre-setup drop camp facility, with an 8x8 cabin that has propane, and water facilities. It is not big enough to be called lodging, so the tent is provided for you sleeping and gear for up to 4 people. Non-hunting guests can come at a small fee if the lodging can be worked out. Your access is guaranteed by the same landowner from the low grounds via ATV side by side along with bringing down your elk. You can bring your own ATV if you would like to be more independent. Riding the ATV on the forest property is not recommended because of the spooking of the elk and deer and you would need an ATV permit available at the park's office in Grand Junction for national forest riding. You can ride on our private land without a permit. All hunting you will be doing without a guide, but the guide will provide hunt details to use at your own discretion

The cabin and tent camp are located on the back side of private property preventing access to where you are located. You are hunting national forest in an area that others would have to walk miles and miles up hill to get where you are located.

**Hunt does not include:** Licenses, food, guiding, field care of game, game pack out except from Cabin area.

**Notes:** You can bring ATV's to get up through the private land or the landowner will take you up in there on his. Bringing your own is recommended but not required.

**Recommendations:**

This is not recommended for the 1<sup>st</sup> time elk hunters. It is terrific elk hunting country but you will need to hunt without guidance on elk that may be 4-8 years old. Because of the location any size bull is possible since elk pass through this area daily 9 months out of the year from many other areas.

~~\$3100~~ Discounted Down to only..... \$1795/person

-----  
  
-----

**#2 Mule Deer Haven areas with high Deer Populations**

There is a Deer Haven hunt that provides a couple of thousands of acres of Oak Brush, Mountain hayfield, plus multiple of river bottom properties with alfalfa along with some deep draws with cedars hiding deer. (Best for Deer but there are elk as well.)

Multiple Location Mule Deer of your choice with Meals and Lodging. If you need a voucher \$2000 there are a few available at ½ price only \$ 1000. This hunt is scheduled for an increase next year. You have a 60% chance of drawing this hunt with 0 points. With 1 preference point you will draw 100% of the time. This is a semi-Guided DIY Hunt on private property. The outfitter will go over the lodge details and instruct you on the fence line locations and where the elk travel and feed the most. The hunt is a 4 day for the 1<sup>st</sup> and second season and 2<sup>nd</sup> and 3<sup>rd</sup> are 4-day hunts with the available of a first half and a second half of those season hunts. On the 4<sup>th</sup> season there are deer licenses available to draw but no vouchers available to allow you to by-pass the drawing.

Last year a 193 Buck Deer was taken on this ranch.

Hunting mainly Mule Deer of his private and leased private land in the general area. Bucks can get big here and last year a little lady with a big rifle dropped a buck over 190” with one shot in the cedar canyons. Meals and lodging are included in this hunt and it is semi-guided but once you leave the ranch for his other leased property the hunt is guided.

Many mornings you will hit the leases alfalfa fields in the area, and in the afternoon sit on good Mule Deer feeding areas as the bucks arrive in the evening.

Mule Deer of your choice w/M&L at ~~\$ 3000~~ discounted down to only..... \$ 1995/person

---

### **#3 A Frame Lodge in the middle of 3000 private acres**

This outfitter has 3000 mountain bowl with elk and deer acres and an A Frame Lodge. (Best for elk but there are Deer as well.)

Special 4<sup>th</sup> rifle season for 4 to 8 hunters at only \$ 2495/person in the great A-Frame Lodge, surrounded by 3000 acres (almost 5 one-mile squares all connected) of prime private land elk country with ATV trails through it. You can hunt with ATV's or trucks or on foot. Areas of timber, pine and aspen, creeks, open pastures and everything elk that an elk loves to be in. It is also an elk movement corridor.

There is a full kitchen available to cook your own meals or for \$ 300 per person your dinner meal will be brought to the Lodge for you, or you can go 5 miles to the main ranch and have dinner there.

---

### **#4 Private Cabin back in the woods on a stream with 500 acres of private land. Bring your ATV.**

SEMI-GUIDED CABIN PRIVATE BACK WOODS CABIN ON 500 ACRES OF PRIVATE LAND ADJACENT TO 400,00 ACRES OF PUBLIC LAND. YOU WILL BE HUNTING IN THE FAMOUS UNIT 421 SOUTH OF GRAND JUNCTION COLORADO.

It has been the home of a strong elk population for many years and it continues to have a strong population with a high reproduction rate. It is one of the few places where the 4<sup>th</sup> season is a either sex season for elk, so you always bring home the bacon? It has 4 archery slots 2 Season Rifle slots, One 3<sup>rd</sup> season slot, and One 4<sup>th</sup> season slot. Get up early in the morning because the cabin is right in some of the prime Elk Habitat. The cabin is vacant all summer so the elk feed just off the porch, "Watch Where you step" and day bed right in the front yard. It is just a small part of the 500 acres of prime private elk ground that only you will be hunting.

**1<sup>ST</sup> SEASON AND 4<sup>TH</sup> SEASON ARE EITHER SEX ELK LICENSES.**

It is recommended but a 4 Wheel Drive Pickup truck will suffice. The guide will show you your cabin, and explain the area and the elk movement to give you a step up on filling your license, then you are on your own. ~~\$3000~~ Discounted Down to only .....\$1995

-----

**#5 A Gentleman's Estate Hunt for Bull or Cow elk.** The prices have been discounted to make them possible to the working man. Guests can also come with you for \$100 since your hunt includes Meals and lodging, along with it being guided. On this hunt you will be the only one hunting the ranch, select whatever elk you wish to take home with you.

People ask me, "How much is it to shoot a cow elk for meat on a guaranteed fill hunt?"  
You come out about \$800 ahead at the end of the day! Read on if you are interested.

We guarantee you will take home an elk and we will guide, supply meals and lodging at this breakneck price. Don't worry about season dates, Hunt archer, Muzzleloader rut September with you 30.06. Take home the best elk you have ever eaten. You will work for it, but you will take one home. Season is September 1- January 31. Don't pay the \$650 Colorado Bull Elk License or the \$500 Cow elk license let us pay it.

Because it is an estate hunt you WILL NOT have to pay the State of Colorado the \$500 for a cow or the \$650 for their licenses. The Ranch covers and licenses and receipt for transportation of the elk. This is a large savings. All Estate Elk are subject to availability.

Welcome to the Estate Hunt in the western atmosphere that you will enjoy. This elk hunt is much like the Traditional Elk Hunt for Bulls or cows at different prices of course. I only have 6 cows and 6 bulls to offer for a limited time and found south of Grand Junction Colorado off I-70.

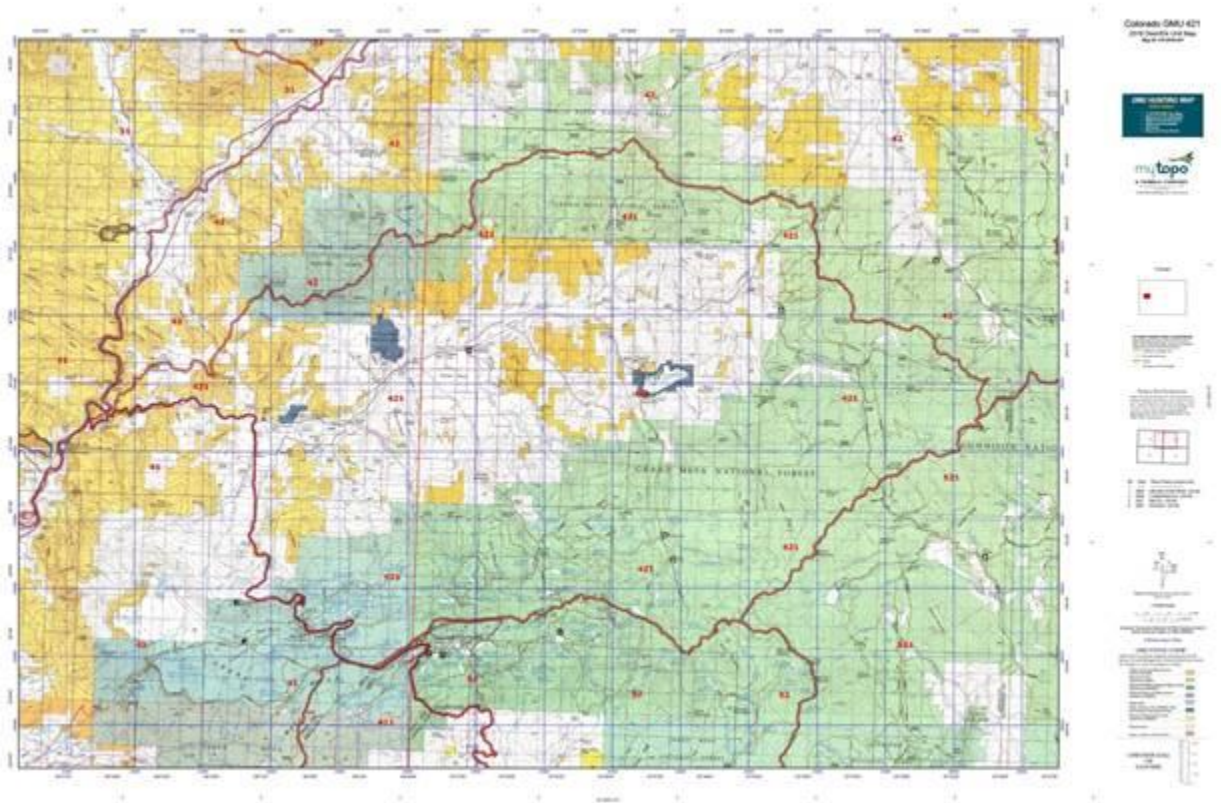
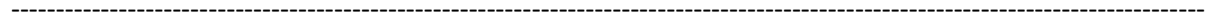
It is a 3-day hunt with meals and lodging. A great Western Colorado Ranch atmosphere and luxury. There are nice bunk houses for everyone, to sleep and stay warm. All meals are at the main ranch house with great food.

This also has bulls at a reasonable price as well. So, you can shoot either or both. The cows with a 3-day hunt, with meals and lodging are only ~~\$3000~~ discounted down to only ..... \$2495

The bulls begin at ~~\$6800~~ and have been discounted down to only..... \$4795

Bring your group of elk hunters and they will go home as their new label s" Successful Hunters."

The best way to hunt them is to have one hunter sit in a blind by a travel corridor while the guide takes the other one and the guide do spot and stalk for a shot at the same time. Their movement is enough to get the elk to move through the corridor to the one that is in the blind. I only have 6 to work with so I wasn't going to do any advertising just give them to friends would be enough to take them all.



Hunter success is extremely important to me. All rear around I handle the properties in a way to enhance and increase the property quality to increase the habitat to attractive value like no other so that it pulls as many animals as possible to where you are hunting. For 50 plus years my ranch and leased properties found it in Colorado's GMU421 in and area around Colburn Colorado is the perfect match to hold local animals and absorb the animal from the large migration pool of animals moving from summer to winter range.

This area is well known for its elk and deer population and quality. Because of this it has a reputation for bucks and bulls alike. The only access is from the bottom of the mountain and you must cross private land to get there. This is good to keep the competition from being in my area and trying to find a big bull with a low IQ in my area.

## Animal Quality and Success Rate

You will be hunting in GMU421. The Colorado Parks and Wildlife lumps that all together with GMU041. It also doesn't defecate between the private land hunting and the public land hunting success. Because private land and the public area adjacent to it has a much higher success rate. Because of that they can't give accurate success rates for where you are hunting except watering everything down by adding the large number of hunters on public ground, that are down at the bottom of the mountain that is very much over hunted. Although we like what they provide us by shooting very few and pushing them up to where you are but the long climb prevents them from following the deer and elk. This provides us with an even higher animal density which in turn increases our success and success rate.

We do try to provide you with as much information as it reflects what is on this large ranch and other private land we have and hunt. The bottom line is our hunters are very successful every year and our return Clientele rate confirms it. The only problem is because it is so high, we only have a few openings each year because the rule is return clientele has the first rights to hunt with us the following years. Hunt with us once and you will be back.

## Hunting Location & Licenses

Species	Best Seasons	GMU #	Licenses	Area
Elk	Archery, 1 <sup>st</sup> , 2 <sup>nd</sup> and 3 <sup>rd</sup> possibly snowed in by 4 <sup>th</sup>	GMU421	Archery along with 2 <sup>nd</sup> and 3 <sup>rd</sup> seasons are OTC. 1 <sup>st</sup> and 4 <sup>th</sup> are a 99% draw, some leftovers, and Muzzleloader requires 2 points to draw.	7,000 to 10,000 feet elevation.
Deer	Archery, 1 <sup>st</sup> , 2 <sup>nd</sup> and 3 <sup>rd</sup> . As a rule, they have migrated most years by 4 <sup>th</sup> season.	GMU421	Drawing with one preference point guaranteed	7,000 to 10,000 feet elevation

--	--	--	--	--

**OTC License = Over the Counter**

## Preference Points Required

Species	Season	% Drawn	Points Needed
Elk	Archery and Rifle	100%	0
Elk	Muzzleloader	100%	1
Mule Deer	Archery, 1 <sup>st</sup> or 2 <sup>nd</sup> Rifle	100%	0
Mule Deer	3 <sup>rd</sup> or 4 <sup>th</sup> Rifle	100%	2

Species	Season	Typical Size	Success Rate
Elk	Archery/Muzzleloader	270" – 300+	%
Elk	1 <sup>st</sup> through 4 <sup>th</sup> Rifle	270" – 300"	%
Mule Deer	Rifle	140" – 190"	%

***Mike Lollar – Hunt Planner***

***Web = <http://www.SportsmansLogistics.com>***

***eMail = [HuntingFishing@SportsmansLogistics.com](mailto:HuntingFishing@SportsmansLogistics.com)***

***15596 W. County Rd. 18E***

***Loveland, CO 80537***

***970-593-0267***