

























Hunt ID:IA-MO-KS-IL-OH-WDeerTurkey-All-Darrin

This year special get 4 hunts with lodging and get a 5th hunter in just for the price of lodging.

Meet is the most qualitative “whitetail specialty” outfitting service in the nation. There is a trend in the hunt industry with the “springing up” of new outfitters across the country that is tricking hunters to focus solely on the hunts price. While our prices are competitive one must remember that we have been perfecting a hunt service focused on the harvest of trophy whitetail bucks for 12 long years. Sure clients can always find a cheaper hunt, but waiting all year long and then ending up with a bad experience in an effort to save a few bucks just isn’t worth it. We have been in the hunt industry for 12 years we have become the highest quality whitetail specialty outfitter by providing a quality service focused on client success.

This outfitter provides whitetail and turkey hunting in the top 5 B&C along with P&Y states except for Wisconsin.

Iowa Zone 5  
North Central Missouri  
Kansas Unit 11  
Illinois Pike County  
Ohio

This is the premier whitetail outfitter of the Midwest running 5 states here in the nation’s agricultural belt.” Our quality can be verified by the outdoors industry awards given unto us by the hunt industry, references, website content, as well as possession of 28 sponsors that don't sponsor any other whitetail specialty outfitter in the Midwest.

We strives to provide the highest quality fully and semi-guided hunts available to the modern day trophy whitetail deer and wild turkey hunter.

We offer trophy whitetail deer hunting in Zone 5 of Iowa. Iowa is without doubt the heavyweight of Midwestern Whitetail States. Iowa ranks as the #2, State in the Nation according to the Pope and Young Record Books. Interestingly enough this state ranks as #2, but hands out the fewest whitetail tags of any state with the exception of Kansas. Imagine the statement, “2nd Fewest tags available, 2nd best State in the Nation, “If you pursue 160 inch plus bucks you must hunt Iowa.” Early in record book recordings the State of Iowa boasted of record book entries from its Northeastern regions of Zones 1 and 2 but all that has changed. The quality whitetail herd is now found predominantly in the South Central and South Eastern portion of the State known as Zone 5. This is where we are located and it is also home to the new World Record Lowenstein Buck.

### **North Central Missouri**

We offer trophy whitetail deer hunting in North Central Missouri. Missouri is the “sleeper” state of the package. Most often times when we acquire a property for outfitting in Missouri it has seen no previous archery pressure at all, and little or no firearms pressure. Missouri ranks as the #5 State in the



Nation according to the Pope and Young Record Books. "Missouri is a silent giant of a whitetail state. Our Missouri farms are virtually undiscovered territory and often times house the largest whitetail trophies of any of the 5 States we hunt. In 2002, 2003, and 2004 we hunted 5 states. Three years in a row, Missouri "coughed up" the largest trophy of all. There are some real "bruisers" hiding in the undiscovered woodlots of Missouri." In Missouri we offer over 650 treestand locations on over 20,000 acres.

### **Kansas Unit 11**

In February 2011 Field and Stream the publication announced Kansas is the #1 State in America to pursue a Boone and Crockett Buck and the #1 State that is adding Boone and Crockett Whitetail Entries. Such is true at here. In 2010 our largest 4 bucks killed came from Kansas. We are also located in South Eastern, Kansas in Unit 11 for whitetail deer. This is the best Unit for Kansas deer hunts. It is here we possess over 10,000 acres of prime whitetail habitat that we will hunt for the first time in 2010. We have searched for over 10 years for premium whitetail ground refusing to run hunts in Kansas unless we picked up ground that truly holds monster bucks and plenty of them. The State of Kansas is re-writing the Boone and Crockett Record Books each year. The State of Kansas has changed the procedure for the purchase of non-resident tags. A new lottery system adopted in 2008 has been developed and it is very easy to get a tag with the draw beginning in April. We will assist you in getting your tag. In Unit 11, last year 744 tags were left over, thus this area will make it easy for you to obtain a Kansas deer hunting tag. The new lottery process allows the majority of hunters who wish to hunt Kansas to draw a tag. Kansas ranks as the #4, State in the Nation according to the Pope and Young Record Books for number of entries. 6 of the top 10 Non Typical entries, recorded in the Pope and Young Record Books belong to the State of Kansas. Those entries net scored as follows: 264 1/8, 257, 249 6/8, 246 3/8, 250 6/8 and 245 4/8. Kansas is the greatest location to harvest a true Non Typical Boone and Crockett Buck.

We Offer trophy whitetail deer hunting in, Pike County, Illinois. Pike County, Illinois is the #2, County in the Nation for the highest quantity of trophy whitetail entries in the Boone and Crockett Record Books, as well as Pope and Young Record Books. The location is extreme West Central Illinois, lying between the Mississippi and Illinois River Basins. This area houses an abundance of trophy whitetails due to firearm limitations placed on hunters, deer management programs implemented by area outfitters, and provides the area deer herd with some of the richest agricultural crops in the nation as food source.

### **Ohio**

Ohio is ranked in the Boone and Crockett and Pope and Young Record Books as the #4 State in the Nation. We are also located in East Central, Ohio beginning in 2011 on virgin hunt ground. We have not outfitted this ground before and it is literally loaded with tons of deer sign. Ohio is as tricky as any State. You must know what part of the State of Ohio to venture to. While you will find outfitters all over Ohio the two highest producing and densest populated whitetail counties in Ohio are Coshocton, Tuscarawas, and Guernsey. THE GOLDEN TRIANGLE OF OHIO is located in Coshocton, Guernsey, and Tuscarawas Counties.

## LOCATING A QUALITY WHITETAIL DEER HUNTING AREA

The formula for successful trophy whitetail hunting is made up of many ingredients. Successful whitetail hunters strive to excel in marksmanship, utilize quality equipment, and perfect hunting techniques along with continually scouting and studying whitetail behavior. Although all these components are of the utmost importance in the harvesting of mature whitetails, a wise ole deer hunter once said, "A hunter is only as good as the ground he hunts, and the amount of time he puts in the stand." There's a lot of truth in that twofold statement. Hunters who consistently harvest trophy whitetails, spend a lot of time in the stand. They hunt at every opportunity. The most important factor of the trophy formula is the quality of ground one hunts. The bottom line is, that no matter how knowledgeable or skilled the hunter is, if he or she is hunting an area that doesn't house mature bucks, the result will be nil.

For the hunters with the resources to seek out a quality location anywhere within the continental United States, the homework begins with identifying which states produce the greatest number of national record book animals. This process begins with researching the statistical archives of two organizations. The Pope and Young Club and the Boone and Crockett Club. The Pope and Young Typical Buck entry list is as follows ranked by number of entries in the record books.

### STATE AND POSITION

1. Wisconsin
2. Illinois
3. Iowa
4. Minnesota
5. Ohio
6. Kansas
7. Michigan
8. Missouri
9. Indiana
10. Texas
15. Nebraska

The Pope and Young Non-typical Buck entries: (States ranked in numeric order from most entries in records books to least entries in record books.)

### STATES AND POSITION

1. Illinois
2. Wisconsin
3. Iowa
4. Kansas
5. Minnesota
6. Ohio



- 7 Missouri
- 8 Indiana
- 9 Nebraska
- 10 Kentucky

A closer look at state quality of whitetail herd can be taken by adding the number of all Pope and Young entries with the number of Boone and Crockett entries (Following is a top ten listing. States are ranked in numeric order of number of entries in the record books.

#### STATE

1. Wisconsin
2. Illinois
3. Iowa
4. Minnesota
5. Ohio
6. Kansas
7. Michigan
8. Missouri 9. Texas
10. Indiana

Six of the top ten “hotspots” share a common denominator. The National Rifle Association reports some states enforce restrictions on firearm hunters pursuing whitetails. Ten states mandate “shotgun only” during the firearms season. These states include Illinois, Iowa, Ohio, Indiana, Maryland, New Jersey, Massachusetts, Delaware, Maine, and Rhode Island. The “shotgun states” comprise 33% of the top twenty-one Boone and Crockett listing entered from the United States. Quite impressive, considering a mere 26% of all states require the use of shotguns for whitetail firearms harvests. These statistics do not encompass the Rompola buck from Michigan. The Boone and Crockett Club top ten listing for whitetail entries of typical and non-typical whitetails.

#### TYPICAL BUCKS

##### HUNTER SCORE LOCATION

1. Milo Hanson 213 5/8 Saskatchewan
2. James Jordan 206 1/8 Wisconsin
3. Larry Gibson 205 Missouri
4. MJ Johnson 204 4/8 Illinois
5. Stephen Jensen 204 2/8 Alberta
6. Bruce Ewen 202 6/8 Saskatchewan
7. John Breen 202 Minnesota
8. Wayne Bills 201 4/8 Iowa

9. Wayne Stewart 201 Minnesota  
(Tie for 10th typical position)
10. Peter Swistun 200 2/8 Saskatchewan
10. Brian Damery 200 2/8 Illinois

#### NONTYPICAL BUCKS

##### HUNTER SCORE LOCATION

1. Picked Up 333 7/8 Missouri
2. Picked Up 328 2/8 Ohio
3. Tony Fulton 295 6/8 Mississippi
4. Unknown 284 3/8 Texas
5. Larry Raveling 282 Iowa
6. James McMurray 281 6/8 Louisiana
7. Joseph Waters 280 4/8 Kansas
8. Neil Morin 279 6/8 Alberta
9. Doug Klinger 277 5/8 Alberta
10. Del Austin 277 3/8 Nebraska

As depicted below from the Pope and Young records, 80% of the top ten typical entries, and 20% of the top ten nontypical entries originate from states which require shotgun usage by firearm hunters. The Pope and Young Club top ten typical/non-typical whitetail entries.

#### TYPICAL BUCKS

##### HUNTER SCORE LOCATION

1. Mel Johnson 204 5/8 Illinois
2. Lloyd Goad 197 6/8 Iowa
3. Curt Van Lith 197 6/8 Minnesota
4. Don McGarvey 197 1/8 Alberta
5. Berry Peterson 195 7/8 Minnesota
6. Robert Miller 194 2/8 Iowa
7. Stuart Clodfelder 194 Colorado
8. Steven Tyer 194 Iowa
9. Roy Allison 193 5/8 Iowa
10. Sam Collora 193 3/8 Iowa

#### NONTYPICAL BUCKS

##### HUNTER SCORE LOCATION

1. Del Austin 279 Nebraska
2. Kenneth Fowler 257 Kansas
3. Kenneth Cartwright 250 6/8 Kansas
4. Clifford Pickell 249 6/8 Kansas
5. Richard Stahl 246 3/8 Kansas



6. Robert Chestnut 245 5/8 Illinois
7. Douglass Sievert 245 4/8 Kansas
8. Dean Dwernuchuk 241 2/8 Alberta
9. Douglas Whitcomb 240 Kansas
10. Ronald Osborne 238 6/8 Ohio

To further investigate world class whitetail hunting localities, look no further than the Boone and Crockett Record Books. Only twelve typical whitetails, at the end on the 1997 scoring period, have exceeded a net score of 200. Five of these animals, 41%, came from “shotgun states”. Forty two, non-typical specimens have exceeded a score of 250. Sixteen of these, 38%, were harvested in “shotgun states”. A higher ratio of whitetail entries was found in states permitting only shotguns during the firearm season. These states had 7.7 times more entries than states allowing rifles. It appears hunters in “shotgun states” are harvesting monster bucks in record numbers. The greatest factor influencing monster whitetail racks is undoubtedly, the life-span of bucks. Increased life-span, simply, equals older bucks with bigger racks. Bucks in rifle states have shorter life spans. The end result is smaller racks in rifle states, and larger racks in shotgun states. Firearm hunters utilizing rifles have the ability to harvest whitetails at greater distances than hunters equipped with shotguns. The further one can shoot, the greater the odds are for success. Shotguns are, traditionally, accurate up to one hundred yards. The “shotgun states” allow firearm hunters to use muzzleloaders in substitution for shotguns. Advancements in technology surrounding muzzleloaders have increased shooting distances to nearly 200 yards. Reloading time can be minimized quickly, with a little practice. Some rifles exceed the maximum range of a shotgun by four or five times the distance. The Boone and Crockett Club pooled a random sample of Boone and Crockett Whitetail Buck entries. The random sample group was examined to determine what caliber of firearm was used for harvest, Boone and Crockett, 1993. The results are as follows.

CALIBER TOTAL

Shotgun Slug 509  
 .30-06 283 .270  
 128  
 .30-30 122  
 .23-.25 109  
 7 mm magnum 73  
 308 72 muzzleloader  
 28 shotgun shot 13  
 Total 1,3374

In the Boone and Crockett Club’s 23rd Big Game Awards, the organization reports its 1995-97 scoring period which updates the overall listing of awards. During this period 1,048 new whitetail buck entries were recorded. 530 of these listings were entered from the “shotgun states”. The answer to

locating a quality state for mature whitetail hunting may lie in the restrictions imposed on its firearm hunters.

Another factor is that habitats in these areas tend to be denser. They also possess many rivers and major tributaries. This reduces hunter accessibility. Soils are also excellent in these states, which in turn produces rich food sources high in protein. Agriculture is of the utmost importance in the production of record book racks. A large piece of the puzzle is directly related to nutrition. After a careful review of the information which is offered for each state, the task is now to choose which state to hunt. I have been fortunate enough to hunt numerous localities which are inclusive of Montana, Illinois, Texas, Iowa, Pennsylvania, Maine, New Jersey, Ohio, Wisconsin, Missouri, Alabama, Louisiana, Florida, Georgia, and provinces in Canada, as a representative of North American Fish and Game. I have harvested mature bucks in most of those states.

For those who don't have the resources to choose any area in the United State of America to hunt whitetails, don't panic. Keep reading and use the suggested format outlined in this chapter to locate the most productive ground possible. Infrared camera have proven that big bucks reside in areas once seen as hopeless. Make the most of the situation.

After pinpointing the state intended to hunt, it is time to get more information. Contact the state's Department of Natural Resources. A list of phone numbers to access information of states which have recorded a Whitetail Pope and Young harvest are as follows (The listings are in quantitative order of recorded Pope and Young entries)

STATE PHONE NUMBER

Wisconsin 608-266-2121

Illinois 217-782-9272

Iowa 515-281-5145

Minnesota 612-296-6157

Ohio 614-265-6565

Kansas 785-296-3600

Michigan 517-373-1214

Missouri 573-751-4115

Indiana 317-232-4080

Texas 512-389-4800

New York 518-457-7267

Maryland 410-260-8101

Kentucky 502-564-3400

Pennsylvania 717-787-2869

Nebraska 402-471-2186

South Dakota 605-773-3151



Oklahoma 405-521-3851  
Montana 406-444-2074  
New Jersey 609-292-2965  
North Dakota 701-328-6300  
Virginia 804-367-1000  
Mississippi 601-362-9212  
Georgia 770-918-6400  
Arkansas 501-223-6300  
Colorado 303-866-3311  
Alabama 334-242-3486  
Tennessee 615-781-6500  
Massachusetts 413-545-0080  
Connecticut 203-486-2840  
North Carolina 919-733-4984  
Louisiana 225-765-2800  
Washington 360-902-2200  
Wyoming 307-777-4600  
Idaho 208-334-2648  
New Hampshire 603-271-3422  
Delaware 302-739-5295  
Maine 207-287-2211  
South Carolina 803-734-3888  
Rhode Island 401-277-2774  
Florida 850-487-3796  
Oregon 503-872-5310  
Vermont 802-241-3600

Wildlife codes vary from state to state. Request specific data from the conservation department of your chosen state surrounding wildlife regulations. Gather information including, bag limits, possession limits, tag data, weapon restrictions, and open/closing dates of the whitetail season. After selecting the area of choice, and obtaining a copy of the state's wildlife code, it is time to pinpoint a specific county or region to hunt. There are a variety of ways to discover prime locations within each state. The least expensive and most easily accessible ground in any state to hunt is the public ground, which is owned and managed by the Department of Natural Resources (DNR). Most states offer an abundant amount of state owned hunting land anyone may hunt. Most of these areas are non-restricted, however a portion of these areas enforce hunting restrictions upon individuals who are seeking specific game. For example, the State of Illinois offers literally thousands of acres for public hunting; however the region located at Clinton Lake requires that archers check in a doe before shooting an antlered buck. Although this mandate may decrease the archer's opportunity at harvesting a mature buck, the positive side to this is state agencies are beginning to practice whitetail herd management aimed at producing larger bucks. Prior to hunting public ground, one

must thoroughly research and determine the wildlife rules surrounding that particular tract of public ground. Public ground can be a tricky place for one to harvest a trophy whitetail, for the simple fact it is just what it claims it is...public. A vast majority of public ground has been overhunted. When hunting on public ground, seek out the most remote sections on that given tract of land. As a side note, ask the DNR which pieces of public ground were most recently open to public access. The most recent pieces are often the most promising, have not been overhunted.

There are other approaches in determining whitetail "hotspots" within a given state. Bowhunting Records of North American Whitetail Deer, First Edition, is unique and resourceful in locating state "hotspots" for all fifty states and provinces. The publication contains deer density maps of the states which have Pope and Young Record Book entries. As depicted below, a map of each state is illustrated, separated into counties with color designations. The darkest shaded counties represent counties which have historically recorded the highest number of trophy entries. This will quickly help anyone determine big buck "hotspots" of the state.

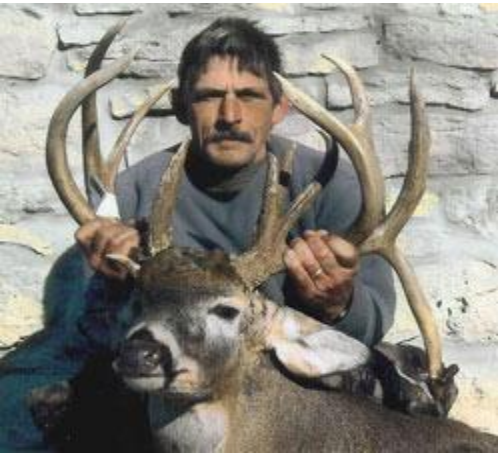
Another strategy in determining the most opportunistic regions of a state is by obtaining records on annual deer harvests over the past several years. This can be accomplished by, once again utilizing and, requesting these records from the state's DNR. Amazing discoveries can be made by utilizing this practice. Illinois contains 101 counties. After reviewing the Illinois DNR annual whitetail harvest records of 1996, it was found that 45 counties, lying along the major river drainage areas, accounted for more than one half of the total deer kill. Instead of requesting the records, simply ask DNR staff which county or area of the state offers the greatest opportunity for a whitetail harvest. Most agencies are "hunter friendly" and will gladly offer assistance.

Once the state and county have been chosen, it is time to seek out a particular tract of ground to hunt. It may be approached in three ways. The quickest and most successful way to find a quality hunting location is by using an outfitter. The rewards of utilizing this approach are often the most rewarding. A guide or outfitting service can usually walk right to the deer, and provide lodging accommodations. Most outdoor magazines contain a section which advertises respectable outfitting agencies. North American Whitetail Magazine has introduced a special outfitting advertisement section entitled, "On the Trail." "On the Trail" is dedicated to helping readers to select an outfitter and the appropriate products for a variety of areas across the United States and Canada. The second strategy to locate a specific piece of land to hunt is referred to as, "The Old Fashioned Way", seeking out private landowners and asking them for permission to hunt. First purchase a county plat book from the area farm service office. This practice seems like a step back in time, and can often be quite difficult and discouraging. Most farmers and landowners are "gun-shy" about permitting outsiders and strangers to hunt, and rightfully so. Landowners tend to be frightened of the liabilities which may arise from permitting individuals to hunt. A landowner's greatest fear is the destruction and disrespect of the property. Most landowners dislike tire ruts, littering, poaching, accidental livestock kills, fence cutting, trespassing onto adjoining landowners, safety hazards, fires, or "breaches" of violations of their agreements.

The third approach for obtaining a quality hunting location is through land leasing. Some DNR agencies offer a public courtesy which connects potential lease's with participating landowners. Inquire about such programs when speaking with the DNR. Advertise in local newspapers in the area chosen to hunt.



Missouri Firearm Monster of 214 inches



Larry Adams takes a 210 inch Droptine Illinois Monster Buck

We provide the highest quality ground in the Midwestern States, at a competitive price, from an





Lee Huffman took this 196 inch Iowa Giant during the 2nd Gun in 2009

We provide the highest quality ground in the Midwestern States, at a competitive price. Informally speaking, when today's trophy hunter seeks out a hunt to purchase, that hunter goes into the transaction somewhat "blind". The bottom line is, if you're purchasing a hunt with an outfitter you are buying a high-ticket item that you cannot see. After calling a few outfitters they all sound the same. Many boast of high success rates, exaggerate acreages, don't speak of hidden fees, and minimize the numbers of hunters they book each year. These approaches result in over-hunted land tracts, and unhappy hunters. Some outfitters implement a business plan wherein they construct many different lodges in a single state. By doing so, they can house 20-30 hunters in each lodge and discreetly run up to 100 hunters per week on an inadequate amount of acreage. Doesn't take long to figure out your hunt is over before it started. We do NOT present our whitetail hunting in such a factory fashion.

environment wherein we care about our hunters and work hard to assure they are successful. Don't be fooled by other entities. There are a ton of outfitters in today's market that run sub-par organizations in an effort to make money and be involved in the hunt industry.

Prior to reporting the success rates let define them. We define success by comparing the number of trophy shot opportunities to the number of hunters in a given time period. For example if we had 10 hunters in camp from November 1 to November 5 and those 10 hunters had 8 shot opportunities at trophy bucks we would report an 80% success rate. This report doesn't mean that 8 of the hunters received shot opportunities. It may be that 5 of the hunters in the group had 8 shots. Any success rate that exceeds 100% simply means that during that time period we yielded more shots at trophy whitetail bucks than we had hunters in camp. Success rates exceeding 100% doesn't mean everyone in that time period received a shot. As a final note success rates are in a no way a promise of harvest. Remember we are hunting wild trophy animals, and any outfitter that promises you a shot is in fact being dishonest.

#### Deer Hunting Success Rates

NOTE: Some time periods state "yet to hunt". "Yet to hunt" means we haven't completed that hunt yet for this season. However, those success rates will appear upon completion. For example the Iowa late muzzleloader success rates do not appear as they don't start until late December. Our Staff will promptly report success rates for the season as they occur. So users need to continue to check the success rates as the season transpires.

Average Success Rates from 2003 to 2010						
State	Nonrut	Pre-Rut	Rut Bow	1st Gun	2nd Gun	Muzzleloader
<u>Illinois</u>	82%	128%	138%	116%	104%	71%
<u>Iowa</u>	85%	156%	224%	162%	116%	95%

<u>Missouri</u>	78%	111%	124%	124%	95%	95%
<u>Ohio</u>	Won't be hunted until 2011					
<u>Kansas</u>	N.A.	82%	83%	120%	47%	78%
					(50mphwinds)	

Note: that Kansas only has 1 year of stats and was tough due to high temps.

Hunting Success Rates (by state)								
<u>Missouri</u>								
HUNT TYPE	2010 Season	2009 Season	2008 Season	2007 Season	2006 Season	2005 Season	2004 Season	2003 Season
Archery Nonrut	89%	105%	105%	66%	62%	66%	71%	60%
Archery Prerut	163%	140%	141%	132%	107%	111%	121%	122%
Archery Rut	141%	154%	141%	152%	128%	106%	85%	86%
1st Gun	142%	100% Heavy Rain	132%	167%	141%	118%	117%	71%
2nd Gun	130%	74% Heavy Rain	138%	83%	104%	88%	69%	71%

Late	107%	88%	88%	42%	33%	unhunted
Muzzleloader	107%			12 inch	200% snow storm	

Illinois

TYPE	2010 Season	2009 Season	2008 Season	2007 Season	2006 Season	2005 Season	2004 Season	2003 Season
Archery Nonrut	70%	71%	144%	64%	72%	61%	93%	81%

Archery Prerut	132%	123%	139%	121%	128%	121%	134%	131%
----------------	------	------	------	------	------	------	------	------

Archery Rut	149%	121%	149%	112%	133%	165%	135%	141%
-------------	------	------	------	------	------	------	------	------

1st Gun	75%	136%	75%	53%	150%	104%	129%	164%
---------	-----	------	-----	-----	------	------	------	------

2nd Gun	72% (40 mph wind)	80%	68%	60%	138%	146%	112%	124%
---------	----------------------	-----	-----	-----	------	------	------	------

Late Muzzleloader	33% (50 mph wind)	46%	100%	66%	66%	120%	27%	80%
-------------------	----------------------	-----	------	-----	-----	------	-----	-----



Iowa

TYPE	2010 Season	2009 Season	2008 Season	2007 Season	2006 Season	2005 Season	2004 Season	2003 Season
Archery Nonrut	99%	unhunted	100%	unhunted	100%	40%	unhunted	unhunted
Archery Prerut	154%	150%	148%	151%	164%	171%	162%	147%
Archery Rut	237%	243%	229%	135%	313%	108%	300%	unhunted
1st Gun	204%	225%	169%	117%	153%	135%	124%	166%
2nd Gun	85% (40 mph winds)	159%	130%	66%	160%	118%	92%	unhunted
Late Muzzleloader	128%	122%	100%	81%	120%	54%	63%	unhunted

Ohio Hasn't been hunted yet.

Kansas

TYPE	2010 Season	2009 Season	2008 Season	2007 Season	2006 Season	2005 Season	2004 Season	2003 Season
------	----------------	----------------	----------------	----------------	----------------	----------------	----------------	----------------

Archery Nonrut	N.A.	Kansas was un-hunted prior 2010
Archery Prerut	83%	
Archery Rut	84%	
1st Gun	120%	
2nd Gun	47% (40 mph winds)	
Late	78% Muzzleloader	

We provide quality portable elevated treestand, elevated ladder treestand, and enclosed box blind ground hunting located in topographical advantages such as funnels, spider webs, low spots, inside corners, etc., rub lines, scrapes, funnels, food plots, and bed areas. Our land tracts are privately owned and managed for trophy buck production, composed of oak timber, bed areas, and agricultural field and food plots.

Many of today's premier trophy whitetail states are accessible only through lottery fashion or random drawing of deer tags. The challenge with booking a hunt with any other outfitter in one of these states is that if you don't draw a tag you don't go hunting. It's no fun to be at home on the couch during whitetail season, because you didn't draw a tag. With us if you don't draw a tag in any state which is lottery driven you are able to simply transfer your deposit to one of our other states, which sells deer tags in a non lottery fashion. In short, it takes the risk out of trying to draw, in a lottery state, while all the while building you preference points for next year's hunt season.

## Whitetail Deer Hunting

**Hunt Classifications:** We classify the hunting of whitetail deer in five categories include Non-rut Archery, Pre-rut Archery, Rut Archery, 1st Gun, 2nd

Gun, and Late Muzzleloader. All archery hunts are 5 days long, while firearm hunts are generally 4 days long with the exception of Illinois 1st Gun and Late



Muzzleloader Hunting which are 3 days long.

**HUNTER'S SAFETY:** Hunters who elect to pursue deer or turkey with firearm born after 1966 must produce a hunter education card in States that sell tags over the counter.

**Hunt Deposits:** A non-refundable deposit of \$500 will be collected on each hunt that is booked. The balance of your hunt is due upon arrival. The deposit may only be considered for refund in the event of a medical or family emergency with documentation from a medical practitioner. If a hunter needs to cancel a booked hunt within the proper timeframe (cancellation policy), we will allow the original deposit to be used towards another hunt within the following 2 years. However, an additional non-refundable \$500 deposit will be required as well to retain the hunt.

**Cancellation Policy:** A hunt must be cancelled 45 days prior to its start. Failure to announce a cancellation as aforementioned will result in the loss of deposit or monies surrendered. Exceptions include medical emergencies verified in writing by a physician, death in the immediate family, or natural disaster deemed pardonable by us.

**Terry Faulkner works hard to hide a 180 plus inch smile.**

**Other Fees:** No hidden fees or trophy fees with us. The only fee or fine imposed is in the event of a harvest of a buck that does not exceed 125 inches. That fee is \$500. and we feel why would anybody would impose a trophy fee upon a hunter. The reason anyone books a hunt is to shoot a trophy animal. It's unfair to charge a trophy fee when that hunter is successful on his or her outing. No trophy fees here!"

## **Two Types of Specialty Whitetail Hunts:**

**1). FULLY GUIDED HUNT:** Our fully



guided hunting trips are hunts wherein stands are hung by our Staff prior to your arrival, guides walk you to the stands to assure you will find the treestand setups and ambush sites, our staff will transport you to the farm, field dressing of your deer is done by an our

Guide, your guide will drag out the animal you harvest, and prepare your animal for taxidermy and meat processing, hero photos, etc. On fully guided deer hunts, the guide doesn't sit with you while you hunt but, he walks you to and from the stand and takes care of you during your stay to strategize on a trophy whitetail harvest. Thorough examinations of strategies and treestand assignments are performed on your behalf to assure you receive the highest quality service. Guides also scout trophy whitetail deer both prior, and during your hunt.



**The Childers group prides themselves on harvesting 160 inch plus archery bucks**

***NOTE: Semi-guided hunts are only available in Missouri.***

**2). SEMI-GUIDED HUNT:** Our semi-guided deer hunting trips are more dependent upon your autonomy, however have proven to be very successful as well. On a semi guided hunt, the hunter is assigned a specific farm to himself. An our Guide will provide you with aerial photographs of the farm. The guide will take you to the farm the day before your hunt begins and show you boundary lines and key ambush sites. Treestands will be hung in key ambush locations equipped with climbing sticks to access the treestand. The hunter will be shown the farm and given advice about how to hunt the farm with specific information on bucks on the property and the whitetail herd there as well. The remainder of the hunt is “do it yourself”. In the event the hunter would need further assistance on the semi guided hunt, we would be present to answer questions and assist you. However, the guide would NOT walk you to and from treestands and transport you to the hunt site. The semi-guided hunt is an excellent way to save a few bucks if you are confident in your woodsman ship abilities; however success rates surrounded semi-guided hunts are significantly lower than that of fully guided hunting.

### **Hunting Rates:**

**Semi-guided hunts do not require a \$500 deposit, but rather the entire amount is due in advance on a semi-guided hunt.**

### 2011 Kansas Deer Hunting Prices

#### Fully Guided Hunts:

Early Muzzleloader Fully Guided (4 days) 9-19 to 10-2	\$2900
Non-Rut Archery Fully Guided 9-20 to 10-20	\$2350
Pre-Rut Archery Fully Guided 10-21 to 10-31	\$2700
Rut Archery Fully Guided 11-1 to 11-20	\$3100
1 <sup>st</sup> Gun Rifle Fully Guided (4 days) 11-30 to 12-3	\$3600
2 <sup>nd</sup> Gun Rifle Fully Guided (4 days) 12-8 to 12-11	\$3100

#### Semi Guided Hunts:

Early Muzzleloader Semi Guided (4 days) 9-19 to 10-2	\$2200
Non-Rut Archery Semi Guided 9-20 to 10-20	\$1550
Pre-Rut Archery Semi Guided 10-21 to 10-31	\$2000
Rut Archery Semi Guided 11-1 to 11-20	\$2400
1 <sup>st</sup> Gun Rifle Semi Guided (4 days) 11-30 to 12-2	\$2700
2 <sup>nd</sup> Gun Rifle Semi Guided (4 days) 12-8 to 12-11	\$2200

**NOTE: HUNT PRICES ARE INCLUSIVE OF MEALS AND LODGING**

**HUNTING DATES : TO OBTAIN SPECIFIC HUNT DATES ON THE HUNT YOU SEEK, PLEASE CHECK THE HUNTING PRICES TABLE ON THE “STATE PAGE” OF YOUR CHOOSING. FOR EXAMPLE, TO CHECK ON ILLINOIS 1ST GUN HUNT DATE, PLEASE CLICK ON ILLINOIS WHITETAIL PAGE, ETC.**

**NOTE: Various hunts are for different lengths of time. For example archery hunts are 5 days, firearm hunts are 4 days, and late muzzleloader hunts are 3 days. As a result, hunters will be awarded the same number of nights for lodging as the number of days their hunts are. Hunters wishing to purchase additional nights of lodging will be charged extra, per the lodge facility. (Normally \$100 per hunter.)**

**Taxes may be applicable on the lodging portion of the hunt price.**

**When you book 5 hunters with us the 6th hunter hunts for free. (The 6th person will be responsible to pay lodging costs.) A savings of up to \$3200 on the 6th hunter.**

### 2010 Trophy Whitetail Deer Hunting Prices

#### Fully Guided Hunts:

Non-rut Archery Fully Guided	\$2350
Pre-Rut Archery Guided	\$2700
Rut Archery Fully Guided	\$3100
1st Firearms Fully Guided	\$3600
2nd Firearms Fully Guided	\$3100
Late Muzzleloader Fully Guided (3-day)	\$2400
Late Muzzleloader Fully Guided (4-day)	\$2900

<b>Semi Guided Hunts:</b>	
Non-rut Archery Semi Guided	<b>\$1550</b>
Pre-Rut Archery Semi-Guided	<b>\$2000</b>
Rut Archery Semi Guided	<b>\$2400</b>
1st Firearms Semi Guided	<b>\$2700</b>
2nd Firearms Semi Guided	<b>\$2200</b>
Late Muzzleloader Semi Guided (3-day)	<b>\$1700</b>
Late Muzzleloader Semi Guided (4-day)	<b>\$2200</b>



**Who says, you can't take a 180 inch plus with during Late Muzzleloader Season.**

## Iowa Whitetail Deer Hunting



We offer trophy whitetail deer hunting in Zone 5 of Iowa. Iowa is without doubt the heavyweight of Midwestern Whitetail States. Iowa ranks as the #2, State in the Nation according to the Pope and Young Record Books. Interestingly enough this state ranks as #2, but hands out the fewest whitetail tags of any state with the exception of Kansas.

Imagine the statement, “2nd Fewest tags available, 2rd best State in the Nation.”, “If you pursue 160 inch plus bucks you must hunt Iowa.” Early in record book recordings the State of Iowa boasted of

record book entries from its Northeastern regions of

**Dan Lyter took this 180 plus monster in** Zones 1 and 2 but all that has changed. The quality whitetail herd is now found **Iowa in 2009** predominantly in the South Central and

South Eastern portion of the State known as Zone 5. This is where we are located and it is also home to the new World Record Lowenstein Buck.

Simply put, if you're not hunting Zone 5 of Iowa, you're not hunting in Iowa.

**Firearms Hunts:** The State of Iowa limits firearm hunters to shotgun or muzzleloader only. No rifles are allowed. While this may discourage the booking of gun hunts by some sportsmen, it is common knowledge that these same limitations may be the chief reason for the existence of trophy bucks in this state. Simply put, when you limit hunters to shotgun or muzzleloader you limit the distances they are able to shoot. In turn by doing so, deer live longer as they are more difficult to harvest. All this equals longer life spans and larger racks. The firearms tags are obtained through a lenient lottery process in May which we will assist you with. The Iowa Firearm Lottery has yielded an estimated 85% tag obtainment success rate. Although tags are NOT a guarantee they are relatively easy to obtain. The 1st Gun Season in 2010 is December 4th through December 7th. The 2nd Gun Season is December 11th through December 14th.

**Archery Hunts:** Iowa presents some of the best archery hunting in the world for trophy whitetails. In 2008 our archers sported a 217% trophy buck shot success rate. (true!) Bow tags are difficult to obtain for 1st year applicants. Normally it is a two year process. Usually the first year you apply for a tag in May you are denied and awarded a preference point. Most often times when the applicant applies the 2nd year he or she obtains the tag. We



suggest that you book two years in advance for an Iowa Archery hunt. Another common booking by hunters is the hunter will book in Missouri , Illinois , or Nebraska during their first year with us. We will help you obtain your Iowa preference point so you may return to hunt the following year in Iowa with us. It's a hunt well worth the wait. The archery season runs from October 1 to January 15, but wise hunters don't waste a Iowa archery tag on a non-rut hunt.

**Muzzleloader Hunts:** Iowa offers a muzzleloader only hunt. In 2010, Muzzleloader only hunters may choose any 3 days between the dates of December 28 to January 10 for hunting with muzzleloader only. The tag is obtained in a lenient lottery process occurring in May. These hunts are very successful but can prove to be brutally cold with temps hovering around 10 degrees at certain times.



**Success Rates:** We calculate success rates by dividing the number of trophy bucks opportunities reported by our hunters, by the number of hunters we take each year in that particular state. During the 2008 season we presented a trophy buck shot success rate in Iowa of 168%. Any rate in excess of 100% implies we offered more shot opportunities at trophy bucks than the number of hunters that visited us during that season. NOTE: No promise or guaranteed shots at trophy bucks are made by us.

**Iowa Location:** Our Iowa deer hunting is located in Promise City, Iowa 45 miles southeast of Des Moines, Iowa. The closest

**Chris Calderone took this 160 plus Iowa<sup>nd</sup> Gun hunt friendly airport located within an hour of airport would be Des Moines, Iowa. A ur monster buck in 2009 on the 2**

**in Iowa**

lodgesite. Those traveling by motor vehicle may travel to our "[trip information](#)" page for a detailed map.

**Iowa Lodge:** In Promise City, Iowa we are erecting a brand new facility for the 2009 season which shall feature a fine establishment with a multitude of amenities.

In Iowa we offer fully guided hunts of your choice at the following cost per hunter for the Iowa hunt of your choice.

## Hunting Rates

**NOTE: HUNT PRICES ARE INCLUSIVE OF MEALS AND LODGING**

*Taxes may be applicable on the lodging portion of the hunt price.*

**NOTE:** Various hunts are for different lengths of time. For example archery hunts are 5 days, firearm hunts are 4 days, and late muzzleloader hunts are 3 days. As a result, hunters will be awarded the same number of nights for lodging as the number of days their hunts are. Hunters wishing to purchase additional nights of lodging will be charged extra, per the lodge facility. (Normally \$100 per hunter.)

*When you book 5 hunters the 6th hunter hunts for free. (The 6th person will be responsible to pay lodging costs.) A savings of up to \$3200 on the 6th hunter.*

2010 Iowa Deer Hunting Prices	
<b>Fully Guided Hunts:</b>	
Non-rut Archery Fully Guided 10-1 to 10-19	\$2350
Pre-Rut Archery Fully Guided 10-20 to 10-31	\$2700
Rut Archery Fully Guided 11-1 to 11-25	\$3100
1st Firearms Fully Guided 12-4 to 12-7	\$3600
2nd Firearms Fully Guided 12-11 to 12-14	\$3100
Late Muzzleloader Fully Guided (3-day) 12-28 to 1-10	\$2400
Late Muzzleloader Fully Guided (4-day) 12-28 to 1-10	\$2900
<b>Semi Guided Hunts:</b>	
Non-rut Archery Semi Guided 10-1 to 10-19	\$1550
Pre-Rut Archery Semi-Guided 10-20 to 10-31	\$2000
Rut Archery Semi Guided 11-1 to 11-25	\$2400
1st Firearms Semi Guided 12-4 to 12-7	\$2700
2nd Firearms Semi Guided 12-11 to 12-14	\$2200
Late Muzzleloader Semi Guided (3-day) 12-28 to 1-10	\$1700
Late Muzzleloader Semi Guided (4-day) 12-28 to 1-10	\$2200

*Mike Lollar – Hunt Planner*

*Web = <http://www.SportsmansLogistics.com>*

*eMail = [HuntingFishing@SportsmansLogistics.com](mailto:HuntingFishing@SportsmansLogistics.com)*

*15596 W. County Rd. 18E*

*Loveland, CO 80537*

*970-593-0267*

*We accept*



*Or ask us about our "Hunt Now, Pay Later Program" valid for all hunters booking our hunts you just need credit approval. We realize the hunt of your dreams will not be a reality because you will never be in better physical condition than you are today. Instead of planning the hunt when you can afford it, hunt now while you are physically able. This program is a must for a hunter filling his bucket list!*