



Hunt ID:CO-MDeer-Muzzleloader-OSAALAM-MOG-OHNATHANJ

Discounted from \$2000 down to only \$ 1495! The DIY muzzleloader Deer hunt to match the DIY hunter's skills.

This hunt is a Landowner Voucher Included hunt with access to 1,200 acres (approximately 2 one mile squares adjacent to each other of farm ground, water and cover. The farm is in GMU080/081 close to the New Mexico/Colorado boarder. You will be welcome to hunt here with the purchase of this voucher.

In addition this is a Unit Wide Voucher so it is valid anywhere in GMU080 or GMU081. GMU080 is about ½ Public lands of some type or another, listed below by GMU. There are ten different State Trust lands and 4 different State Wildlife areas with minimal hunting pressure during Muzzleloader season.

You will receive a map of the property and it is your responsibility to stay on the property. The landowner will provide minimal assistance but for the most part. The closest town of any size is Alamosa Colorado.

Purchase all three and you can select your time to hunt the farm. If you decide to buy just one then each of the buyer's names will be put in a hat and dates assigned accordingly.

Albuquerque is the closest major airport and car rentals are easily accessible there. It is a 3 hour drive north from Albuquerque, a 5 hour drive south from Denver. However, it is best to drive if possible to bring all your gear and especially to carry your meat back with you without the expense of extra baggage that weighs over the limit.

Season Dates are September 11 to September 22 for a Buck license with a hunt code D-M-082-01-M

Location: Those portions of Alamosa, Conejos, Mineral and Rio Grande counties bounded on the north by US 160; on the east by the Rio Grande River; on the south by La Jara Creek, the Alamosa River, USFS Rds 250 and 380 and Elwood Pass; and on the west by the Continental Divide.

Elevation: Ranges from about 8,000 feet to 13,500 feet.

Terrain: Mountainous.

Vegetation: Agricultural lands in the lower elevations. Vegetation changes from desert shrubland to pinons and junipers, aspens, Douglas firs, spruce-fir forests and alpine tundra, as elevation increases.

Weather: Extremely variable with typical fall weather usual in the first hunting season. Hunters can expect snows any time after that.

Land Status: About 41 percent private, 44 percent national forest with some BLM and state lands.

Hunter Access: Lots of good access roads. The main ones are Park Creek, Pass Creek, Beaver Creek, Willow Creek, San Francisco Creek, Dry Creek, Rock Creek and Alamosa River roads.

State Trust Land
Dry Creek – 1,280 acres
Gerrard – 799 acres

Recommended hunting areas for Mule Deer: This unit is not a prime deer hunting area but it is improving. Recommended areas are Pinus Creek, San Francisco Creek, and around Rock Creek.

Additional Resources: Del Norte offers the nearest complete services, including a hospital. Additionally, South Fork has game processing and cold storage. Monte Vista has complete services.

Stats for GMU080
DAU Population estimate 5,170
Bull/Buck Harvest 130
Cow/ Doe Harvest 8
Calf/ Fawn Harvest 0
Total Hunters 484
Overall Success 29%

CWD Prevalence 0%

DAU Information: Information on each DAU can be found by following the link below. A DAU will usually include several GMUs, and will provide area information.

<http://wildlife.state.co.us/Hunting/BigGame/HerdManagementDAUPlans/>

Colorado Parks and Wildlife
Monte Vista Service Center
0722 South Road 1 East
Monte Vista, CO 81144
719-587-6900

Bureau of Land Management
2850 Youngfield
Lakewood, CO 80215
303-239-3600
<http://www.blm.gov/co/st/en.html>

US Forest Service
710 Simms
Golden, CO 80401
303-275-5350
<http://www.fs.fed.us/>

US Geological Survey
(800) 435-7627
<http://topomaps.usgs.gov>

Emergency Contact Information:
Colorado State Patrol (719) 589-2503
Alamosa County Sheriff (719) 589-6608
Road conditions, weather information and Chamber of Commerce:
Colorado Road Conditions and Road Construction Information (877) 315-7623
National Weather Service <http://www.weather.gov/view/states.php?state=co&map=on>

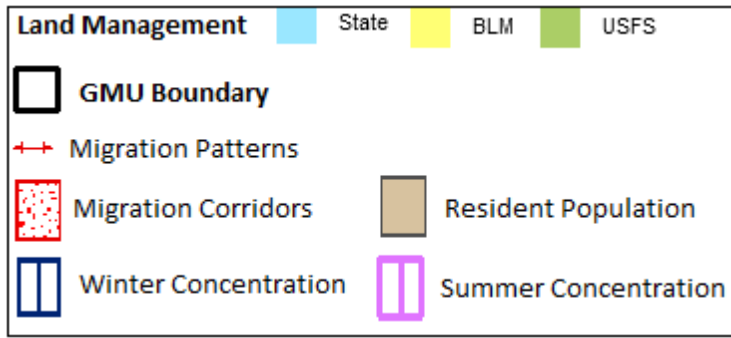
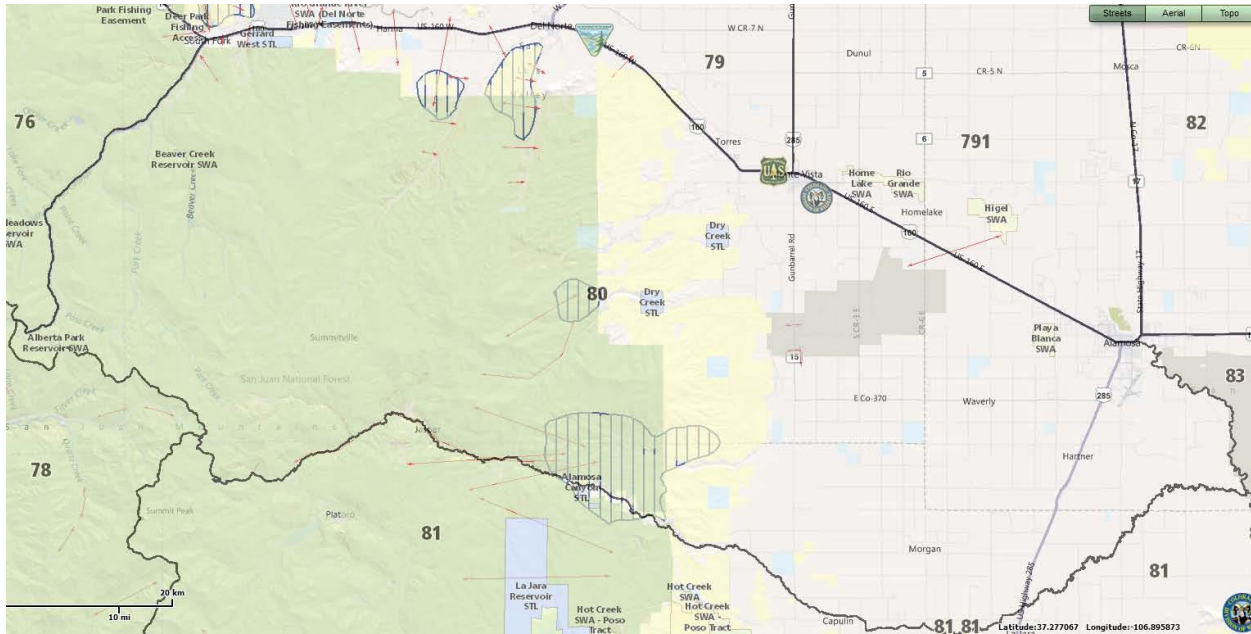
Alamosa County Chamber of Commerce 1-800-258-7597

Link to Colorado Meat Processors

<http://www.colorado.gov/cs/Satellite/Agriculture-Main/CDAG/1167928218817>

PLEASE NOTE: This GMU Tip Sheet is provided to big game hunters as a virtual scouting tool. Please remember wildlife and conditions on the ground are constantly changing. There is no substitute for physically scouting your GMU. For more detailed information, please contact Colorado Parks and Wildlife at (303) 297-1192 (M-F 8am-5pm MST). Information depicted is for reference purposes only and

is compiled from the best available sources. Reasonable efforts have been made to ensure accuracy. Colorado Parks and Wildlife is not responsible for damages that may arise from the use of this GMU Tip Sheet. Mapped property boundaries may or may not reflect actual legal holdings. Please observe and respect all marked boundaries and signs on properties. Colorado Parks and Wildlife suggests that you err on the side of caution and avoid entering areas of question. It is the hunter's responsibility to know where private property exists. Colorado law does NOT require landowners to fence or mark property boundaries.



GMU081

Location: South-central Colorado, portions of Alamosa, Archuleta, Conejos and Rio Grande counties. Bounded on the north by USFS roads 380 and 250, the Alamosa River, and La Jara Creek; on the east by the Rio Grande River; on the south by New Mexico; and on the west by the Continental Divide.

Elevation: Unit 81 ranges from 7,600 feet at the valley floor to 13,000-foot mountains.

Terrain: The unit contains rolling prairie in the lower elevations, climbing to foothills and mountains with steep slopes and canyons.

Vegetation: Ranges from farmland and oak brush in the lower elevations, to ponderosa pine forest, spruce-fir forest and alpine tundra on the mountain peaks

Weather: Weather can vary widely and unexpectedly. Temperatures can range from 60 degrees above to 30 degrees below zero during the big game seasons. Come prepared for the worst and hope for the best.

Land Status: Approximately 40 percent national forest, 22 percent BLM, 30 percent private and 8 percent state owned lands.

Hunter Access: Good access is provided by Colo. Hwy. 17. Forest Road 250 is a good gravel road but is not usually plowed when it snows.

State Trust Land: Alamaditas – 640 acres, Alamosa Canyon - 240 acres, La Jara - 42,881 acres, Los Mogotes Peak – 640 acres, Vicente Canyon - 640 acres, Pinon Hills – 640 acres, San Luis Hills – 640 acres.

SWA: La Jara – 2,808 acres, La Jara Reservoir – 635 acres, Hot Creek – 3,494 acres, Sejo Springs – 640 acres (small game).

Recommended hunting areas for Mule Deer: This unit is not generally recommended for deer. However, Fox Creek, Osier Mtn., and Conejos Canyon are fairly good, as well as the south San Juan Wilderness area.

Recommended Hunting areas for Elk: Elk hunting is fairly good anywhere on national forest especially the south San Juan Wilderness. Hunters should note that access in the wilderness is limited to horseback and foot. Additional areas for elk hunting are Platoro Reservoir and along the Chama River. Later seasons as elk move to lower elevations, hunters should focus efforts on BLM, STL and SWA lands.

Small Game Hunting: Good waterfowl hunting can be found on the Rio Grande and Conejos rivers. Ptarmigan hunting is fair above timberline.

Additional Resources: The nearest complete services are in Antonito including locker plants and a medical clinic. Additional locker plants may be found in Sanford and Romeo, and the nearest hospitals are in Alamosa and La Jara.

Deer Stats

DAU Population estimate 5,170

Bull/Buck Harvest 160

Cow/ Doe Harvest 25

Calf/ Fawn Harvest 5

Total Hunters 474

Overall Success 40%

CWD Prevalence 0%

Preference point requirements can be found at the Colorado Parks and Wildlife website, by clicking the "Hunting" link, proceeding to the "Big Game" link, and finding the information under the "Statistics" link. There are separate tables for deer and elk. Preference point requirements have the ability to change dramatically from year to year based upon the number of applications and the number of licenses issued for each unit.

<http://wildlife.state.co.us/Hunting/BigGame/Statistics/>

DAU Information: Information on each DAU can be found by following the link below. A DAU will usually include several GMUs, and will provide area information.

<http://wildlife.state.co.us/Hunting/BigGame/HerdManagementDAUPlans/>

Colorado Parks and Wildlife
Monte Vista Service Center
0722 South Road 1 East
Monte Vista, CO 81144
719-587-6900

Bureau of Land Management
2850 Youngfield
Lakewood, CO 80215
303-239-3600
<http://www.blm.gov/co/st/en.html>

US Forest Service
710 Simms
Golden, CO 80401
303-275-5350
<http://www.fs.fed.us/>

US Geological Survey
(800) 435-7627

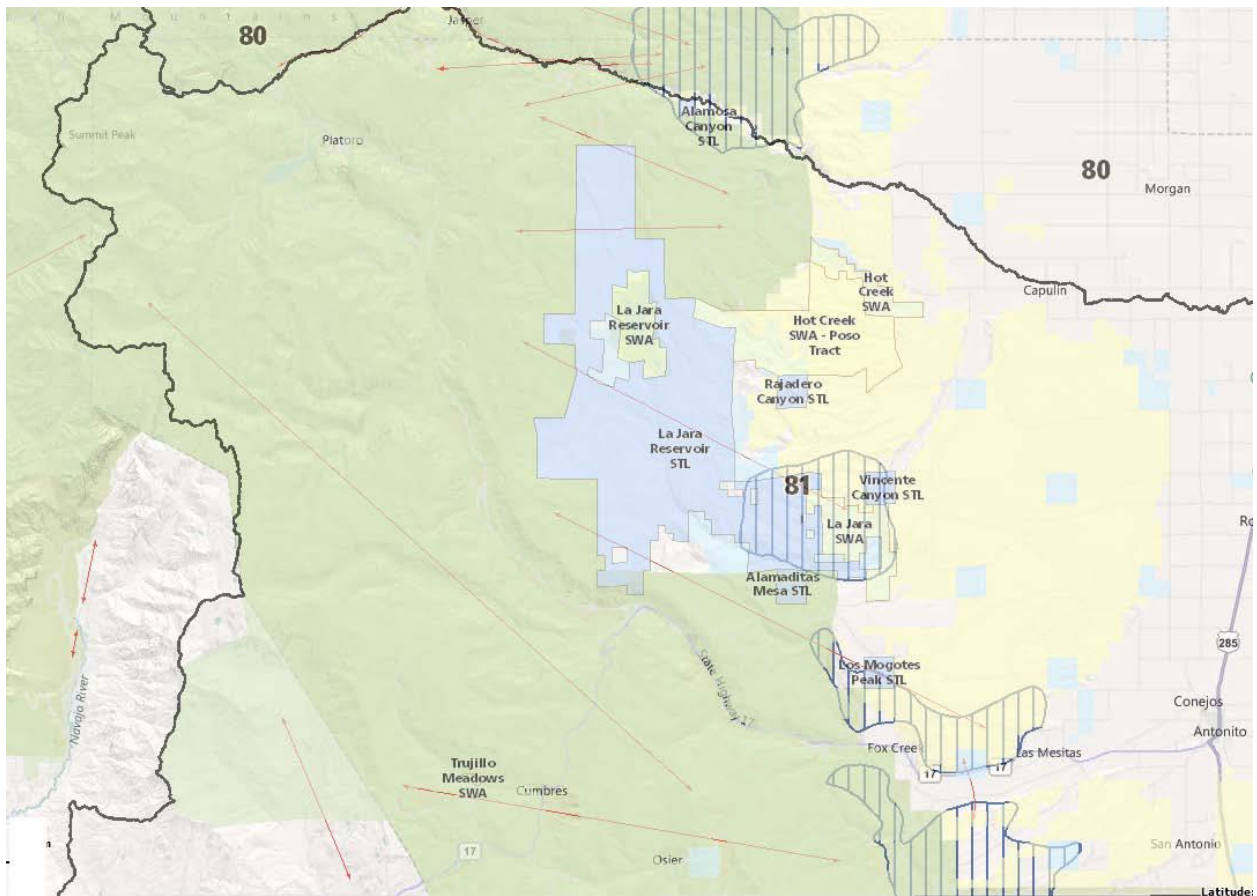
<http://topomaps.usgs.gov>

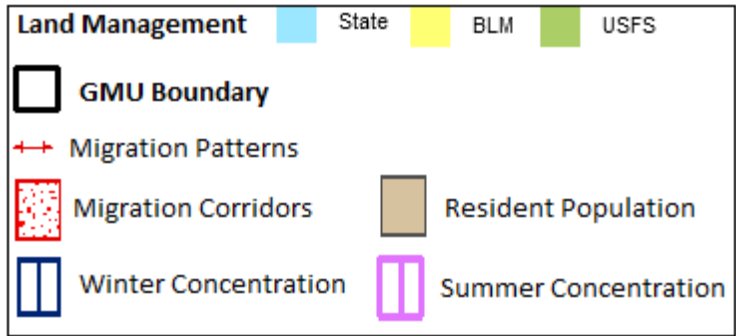
Emergency Contact Information:
Colorado State Patrol (719) 589-2503
Conejos County Sheriff (719) 376-2196
Road conditions, weather information and Chamber of Commerce:
Colorado Road Conditions and Road Construction Information (877) 315-7623
National Weather Service <http://www.weather.gov/view/states.php?state=co&map=on>

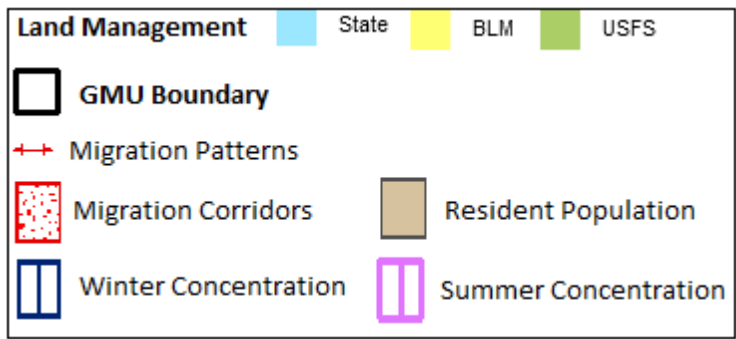
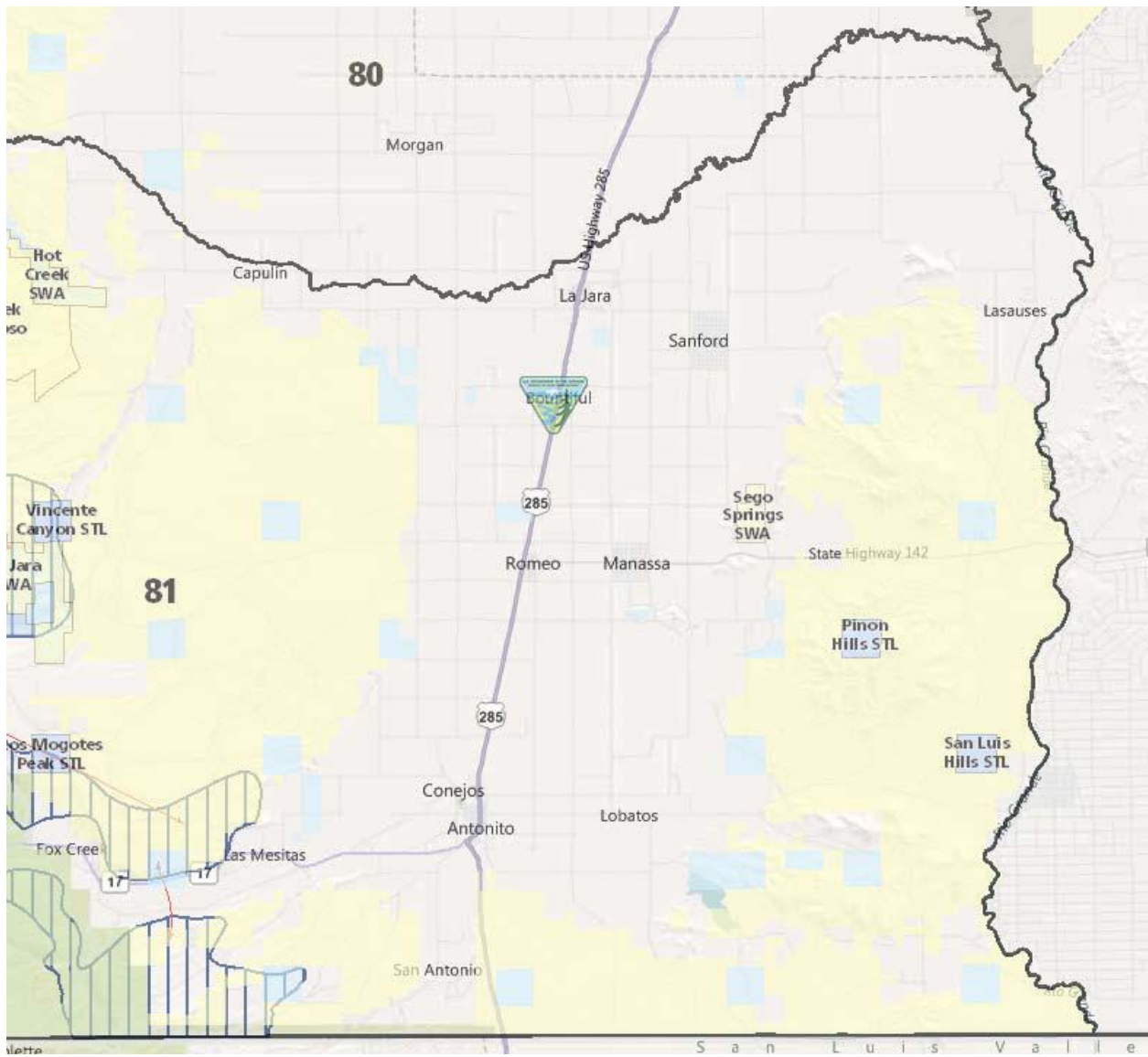
Conejos County Chamber of Commerce 719-376-2277
Link to Colorado Meat Processors

<http://www.colorado.gov/cs/Satellite/Agriculture-Main/CDAG/1167928218817>

PLEASE NOTE: This GMU Tip Sheet is provided to big game hunters as a virtual scouting tool. Please remember wildlife and conditions on the ground are constantly changing. There is no substitute for physically scouting your GMU. For more detailed information, please contact Colorado Parks and Wildlife at (303) 297-1192 (M-F 8am-5pm MST). Information depicted is for reference purposes only and is compiled from the best available sources. Reasonable efforts have been made to ensure accuracy. Colorado Parks and Wildlife is not responsible for damages that may arise from the use of this GMU Tip Sheet. Mapped property boundaries may or may not reflect actual legal holdings. Please observe and respect all marked boundaries and signs on properties. Colorado Parks and Wildlife suggests that you err on the side of caution and avoid entering areas of question. It is the hunter's responsibility to know where private property exists. Colorado law does NOT require landowners to fence or mark property boundaries.







=====

New Mexico Hunt for Big Bulls

=====

The voucher and the private land access is only \$ 1495 per hunter.

In addition this outfitter straddles the line between both Colorado and New Mexico hunting some of the most possible prime areas in New Mexico and Colorado.

New Mexico hunts around the famous Chama New Mexico start with cow hunts at only \$995 and go up to \$5000 which is very reasonable in New Mexico prime real estate for elk.

All licenses are private land owner vouchers, there is no draw, they are a guaranteed tag!

Archery Either /Sex-\$4,495

Rifle Bull-\$4995

Rifle Cow-\$ 995

Additional Persons-\$100/per day

\$50 per day per additional horse

Special rate for group of four rifle hunters or more- \$4,750 per hunter.

Mike Lollar - Broker

Web = <http://www.SportsmansLogistics.com>

eMail = Sales@SportsmansLogistics.com

15596 W. County Rd. 18E

Loveland, CO 80537

970-593-0267

We accept



Or ask us about our "Hunt Now, Pay Later Program" valid for all hunters booking our hunts you just need credit approval. We realize the hunt of your dreams will not be a reality because you will never be in better physical condition than you are today. Instead of planning the hunt when you can afford it, hunt now while you are physically able. This program is a must for a hunter filling his bucket list!

