























Hunt ID: 5022-S-N-795-ElkMDeerAntelope-CO-003-RA4IGC-R5S-N7DO-Great Hunt early or late

### **DIY HUNTING ON THOUSANDS OF ACRES.**

There are usually Bull elk leftovers for this Ranch. Two rules book early and note some are available as left overs and some require you to put in for the draw.

Bull Elk 4<sup>th</sup> Season 11/11-11/15 \$3500 reduced down to only \$1995\*\*\*\*\*

This 4<sup>th</sup> bull elk season is great for a low impact hunt with a 4 wheel drive truck. There are two track roads all around the ranch which allow you to drive to the high points, then glass from inside or outside of the cab of the truck. Once located quietly back down off the hill to not disturb them and work out a good ambush plan. In town lodging is only 20 minutes away. Also in town are 2 meat processors that even make sausage and jerky.

This country is rolling hills with draws but much more open than many places where elk are hunted. This improves the ability to find them, but also for them to spot you. Staying out of site and no talking will put a bull in the back of your truck as fast as a 30.06 sighted in for 200 yards will.

In this country I recommend a 30.06 with a 180 grain bullet or the 300 magnum classes of bullet. Sight you rifle in for dead on at 200 yards. Then practice shooting at 300 yards so you know what it is like to shoot over 2000 yards. You bullet will drop 8-10 inches at 300 yards, More important than that though is the quality of you shooting. Getting a good rest, restrict you breathing is of upmost important at 300 yards. If you can get comfortable at 300 yards then the skills you learned there will make a 300 yard shot a slam dunk, and bring horns hanging out of the back of the truck for the ride home.

If you want to check your rifle after the trip and before hunting the rifle range north of Craig is open to the public the Friday before the elk and deer seasons that start on a Saturday. If you don't hit one of those there is a free range south of Hayden that is a DIY range and you can shoot it any time.

Antelope \$1400 reduced to only..... \$ 795

The antelope buck requires a point to hunt a buck or zero points to get a doe license.

Archery Deer \$1600 is reduced down to only.....\$ 795

It is an either sex draw license with minimal points required but no leftovers.

Archery Deer Licenses have a 50% chance of drawing with 0 points and this ranch is full of mule deer that don't migrate.

November 16-November 31 Cow elk hunt is \$1500 reduced to only..... \$ 995

Late Rifle Cow elk in the December season or after all the bull seasons is \$1500 reduced to only..... \$ 995

The December cow requires at least a point. The late November season from approximately thanksgiving until the end of the month of November can be drawn with zero points but must be in the application draw, there are never any leftover licenses after the draw.



Please note that these are great hunts if you have a license.

All hunting must be concluded by 10/12, and can't begin again until after 11/20.

Muzzleloader pricing is the same as above by animal. Archery Deer or Antelope special, Muzzleloader Deer only and late season cow elk hunting. This is early season hunting at its finest! Don't miss out! DIY on thousands of acres of Private land in GMU003 and GMU301 North West of Craig Colorado the Big game hotspot in the North West corner of Colorado. All hunting must be concluded by 10/12, and can't begin again until after 11/20.

The property is a private ranch and the deer and elk know it and take advantage of the easy feed and water sources. The late cow elk season is a great hunt we call it a Low Impact hunt. The property being a ranch has roads everywhere. So it is mainly drive, glass and stalk, as a rule you don't get out until you see brown. The rolling hills and draws are great cover for the migrating and residential herds.

This area is known for its record class antelope speaking of Boone and Crockett minimums and Pope and Young is even easier if you don't shoot the first antelope you see. A ground blind at one or two of the water location close to the herd buck that you likes location should do the job every time.

The area is an area for Antelope for all seasons. There are local and migratory deer along with being mainly a winter migration area for elk but there are only cow licenses issued and available for December which is very successful. There has been minimal hunting during these dates in the last 5 years. I have hunted the ranch next to this one a number of times and always brought home the bacon. DIY hunting on the adjacent property is \$2000.

#### License availability

Draw, Left over, or voucher for Deer

Draw, Left over, or voucher for Antelope

Draw, Left over, or voucher for Late Season Cow Elk 12/1-12/31

GMU003, 301

Antelope Rifle Season 10-6 to 10-11 Unit wide 3

GMU003,4,5,14,214,301,441

Deer Muzzleloader 9-14 to 9-22

Unit wide 1

This is what is available at the time of putting together this hunt. Vouchers are a fast moving commodity they come in and sell out quickly. If you would like to be put on the Voucher watch list for Colorado, New Mexico, Utah, Nevada, Arizona, Oregon or Idaho send an email or call us.

This DIY HUNT is for Deer elk and antelope Rifle, Muzzleloader and Archery on private land on a limited basis. If you don't need a guide but do want some private property to hunt this is the place.

Antelope and deer archery are very good on thousands of acres NW of Craig Colorado made up of hilly sage brush country, steep draws and pastures, with water tanks to provide water for the Livestock kept there. Bring your own ground blind and set it up near a water source for the archers.

Hunting can only be before approximately (Beginning of 2<sup>nd</sup> season) October 18<sup>th</sup> and after November 12<sup>th</sup> (After the 3<sup>rd</sup> season) the other way to look at it is 1<sup>st</sup>, 2<sup>nd</sup> and 3<sup>rd</sup> season because of the livestock operation the property can't be hunted. Otherwise it can. It is only open to groups of 4 hunters or less at a time. The livestock have priority.

The early season is a 3 day hunts at only\$ 895, for elk, or deer or antelope. Additional days can be added as long as they are requested and paid for up front ate \$ 150 per day. If you book extra days we will have to make arrangement for the hunter that was to come in after you. You must make confirmed extra day arrangements and pay them before entering the property so that arrangement can be made accordingly. You cannot extend after you have hunted 3 days. In most cases the 5 days of hunting is your best option for primitive hunting and late cow hunts.

The property has local herds of deer and antelope with more arriving later in the year. The elk hunting is best the last days of December. The tends to be some local elk that stay in the Craig valley(about 20,000 head) and don't return to the mountains in the spring but they range a large are of the valley on and off of this property. The elk migration comes through this area and because of the feed in the area they tend to hang there unless they are pushed off of this private property. The property get grazing in the front but only light grazing if any on the back end of the ranch.

If you want to hunt the season before October 8 and after November 10 this is the place for you.

Lodging can be obtained in Craig with many motels to select from. If you want to camp on the property that is allowed but no open fires will be allowed. The wild grasses are very dry this time of the year so we must keep the fire risk at zero. Cigarette smoking while hunting is prohibited also.

GMU003 & GMU301 hunting opportunities/Dates are approximate

#### **Deer Seasons and Preference Points to Draw**

Archery	Either sex 0 points	08/31-09/29 *
Muzzleloader	Buck 2 points Doe 0 points	09/14-9/22 *
2nd Rifle	Buck 0 and doe 0	10/19-10-27
2nd Rifle PL	Either sex 0 and Doe 0	10/19-10-27
3rd Rifle PL	Either sex 0	11/02-11/10
3rd Rifle	SPECIFY Buck or Doe 0 points	11/02-11/10
4th Rifle	Buck Only 15 preference points	11/13-11/17 *

Possible left over licenses in some categories announced in July and sold first come first serve in August

#### **Elk**

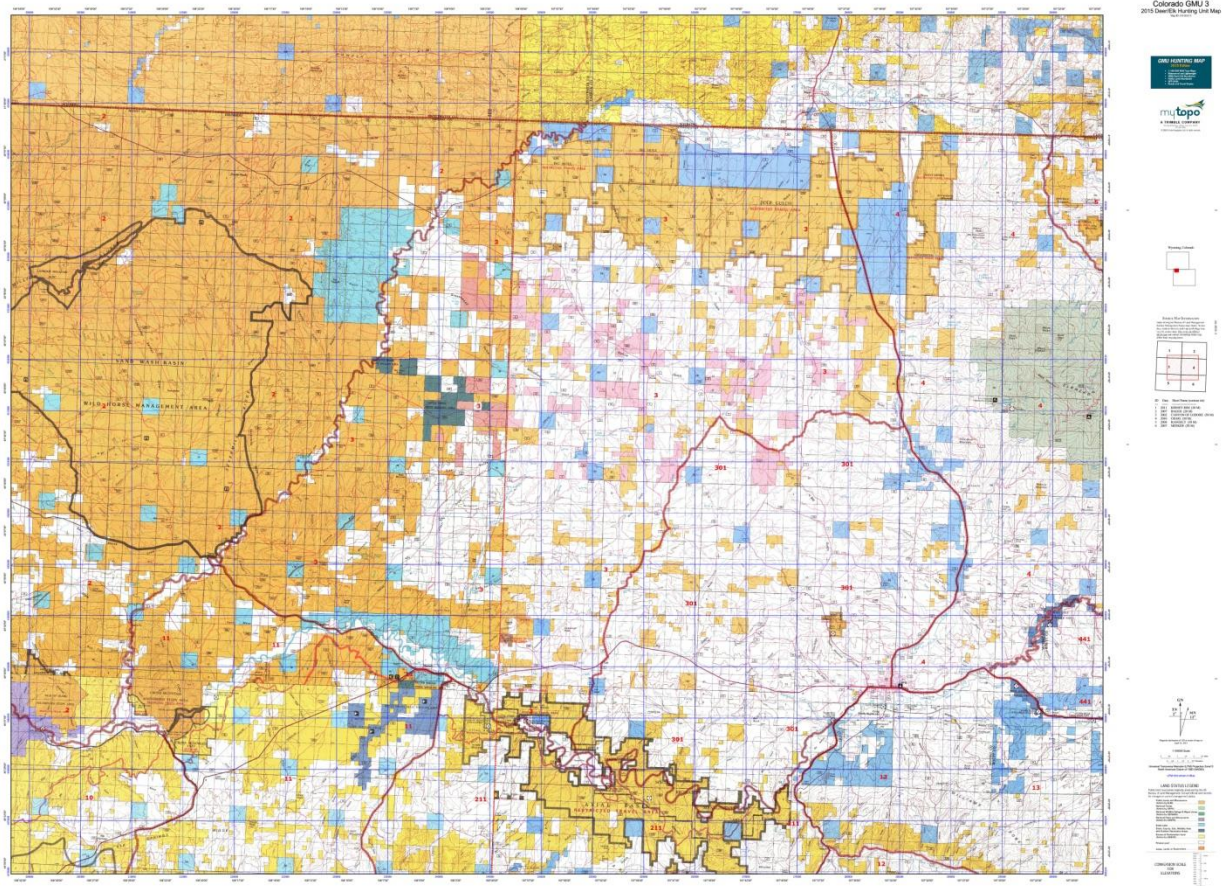
Archery	Bull, Cow or either	0 Points	08/31-09/29
Muzzleloader	Either Sex 0 points or Cow	0 points	09/14-9/22
Early Season	Cow	1 point	10/12-10/16
1ST PL	Cow	0 Points	10/12-10/16
1st Rifle	Cow 0 Points either sex	0 Points	10/12-10/16



Possible left over licenses in some categories announced in July and sold first come first serve in August

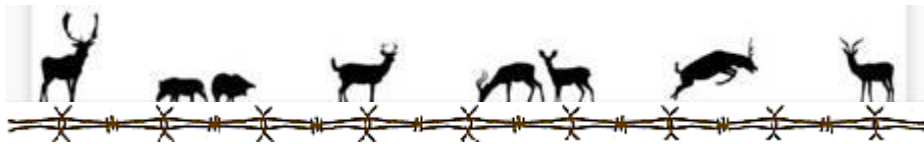
ARCHERY	Buck 3 Points Doe	0 points	08/15-09/20 *
Muzzleloader	Buck 8 Points and Doe	1 Point	10/21-10/29
REGULAR	Buck 13 Doe	1 point	10/06-10/12 *
Rifle PL	Buck 0 and Doe	0 Point	10/06-10/12 *

Possible left over licenses in some categories announced in July and sold first come first serve in August



Archery Deer and Antelope are excellent on this ranch along with muzzleloader also. There is a good population of resident animals of both. The resident elk are very few for a resident herd but 3<sup>rd</sup> season and after the large elk migration comes in here and many stay for the winter. Like any elk hunting it is all in the weather when you talk elk. The golden rule is the worse the weather the better the hunting. Elk need to eat more in cold weather; it is harder to find feed under snow so they are exposed for longer periods of time. With snow on the ground the advantage is definitely with the hunter, brown elk on a white snowy background shows up quite well. Because of this the 4<sup>th</sup> bull elk season is the best for bull elk since it is the last bull elk season of the year.

Deer have to be shot before the beginning of 2<sup>nd</sup> season which means archery or muzzleloader.



***Archery Season Go in on Sunday and come out on a Saturday (Break between 2 groups)  
5 day hunt with 1 day (Saturday) in and 1 day (Sunday) out (season start 8/26)***

***Season Dates are as follows:***

<b><i>Sunday</i></b>	<b><i>Saturday</i></b>
<b><i>1<sup>st</sup> week 08/26-09/02</i></b>	<b><i>Archery*</i></b>
<b><i>2<sup>st</sup> Week 09/03-09/09</i></b>	<b><i>Archery</i></b>
<b><i>3<sup>nd</sup> week 09/10-09/16</i></b>	<b><i>Muzzleloader/Archery</i></b>
<b><i>4<sup>th</sup> week 09/17-09/24</i></b>	<b><i>Archery*</i></b>

- Note: Because season dates and the days of the week don't align perfectly so the First week has a 1 day earlier and the last week has 1 extra day on the end.***

***1<sup>st</sup> Season 10/14--18***

***2<sup>nd</sup> Season 10/21-29***

***3<sup>rd</sup> Season 11/04-12***

***4<sup>th</sup> Season 11/15-19***



## License Fees

**Important Note:** Anyone ages 18-64 MUST purchase a Habitat Stamp in order to buy or apply for a preference point or for a hunting or fishing license. For more information, see [Habitat Stamp Basics](#).

	Resident	Nonresident
Elk, Cow	\$ 49	\$ 469
Elk, Bull or Either Sex	\$ 49	\$ 629
Deer	\$ 34	\$ 379
Moose	\$ 254	\$ 2,084
Pronghorn, Buck or Doe	\$ 34	\$ 379
Bear	\$ 44	\$ 354

\*All prices include a 25-cent search-and-rescue fee, a 75-cent surcharge for the Wildlife Management Education Fund and a \$3 application fee for limited licenses applied for in the draw.

\*Nonresident fishing licenses are good through March 31.

Habitat Stamps (non-refundable)	Resident	Nonresident
Habitat Stamp (valid 4/1–3/31)	\$ 10	\$ 10
Lifetime Habitat Stamp	\$ 300.25	\$ 300.25

**Mike Lollar – Hunt Planner**

**Web = <http://www.SportsmansLogistics.com>**

**eMail = [HuntingFishing@SportsmansLogistics.com](mailto:HuntingFishing@SportsmansLogistics.com)**

**15596 W. County Rd. 18E**

**Loveland, CO 80537**

**970-593-0267**

**We accept**



*Or ask us about our "Hunt Now Pay Later Program" valid for all hunters booking our hunts you just need credit approval. We realize the hunt of your dreams will not be a reality because you will never be in better physical condition than you are today. Instead of planning the hunt when you can afford it when you are 80 years old we want you to be in the condition required to make the hunt successful when you are 60 years old.*

*This program is a must for a hunter filling his bucket list! Ask Greg or Sharon about the details for this great program.*

---

*We can provide you with an interest free loan on a hunt by allowing you to make a \$500 deposit on the hunt and pay the balance in payments of \$400 every 2 weeks or more. You can use it for a hunt this year as long as it is paid in full 60 days prior to the hunt or it can be stretched to 2 years.*

*There is a \$50 setup fee and the money deposited is non-refundable but can be used for any of the hunts if the primary one doesn't work out.*

*We offer what no one offers hunts on time at 0% interest.*