

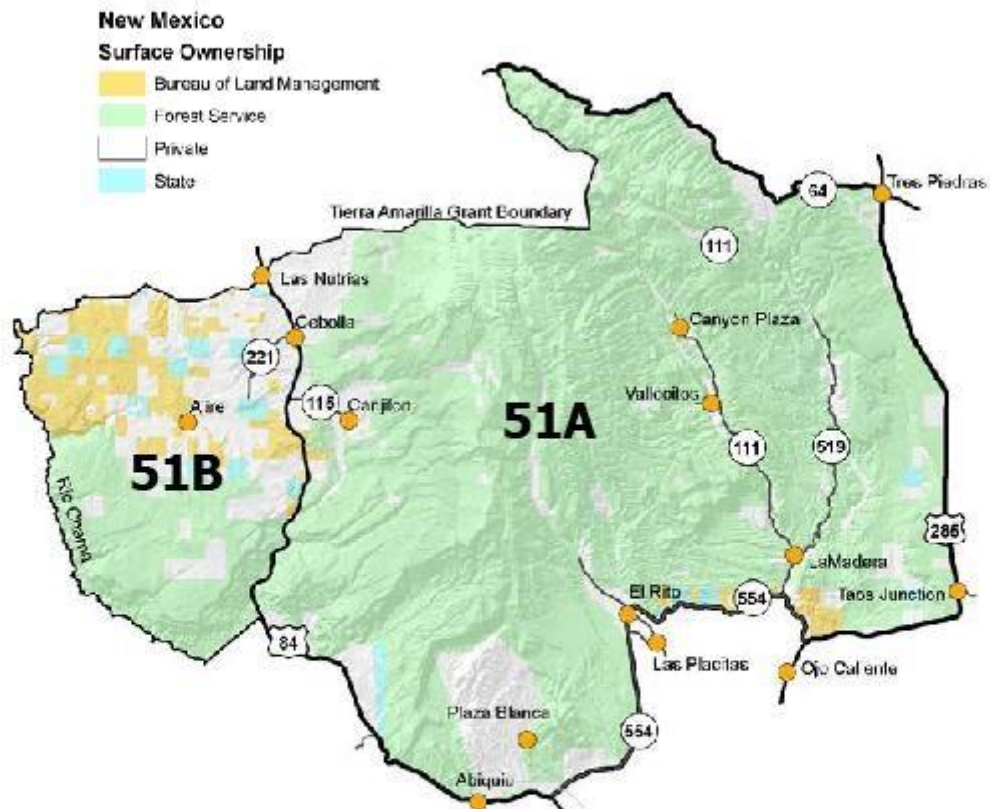








Game Management Unit 51



GMU 51: Beginning at the intersection of US 64 and the eastern boundary of the Tierra Amarilla grant, running south then west along the Tierra Amarilla grant boundary line to its intersection with the Rio Chama, then south along the Rio Chama to its intersection with the Piedra Lumbre grant boundary line, then northeast along the Piedra Lumbre grant boundary line to its intersection with US 84 northwest of Abiquiu, then southeast along US 84 to its intersection with NM 554 east of Abiquiu, then north and east along NM 554 to its intersection with NM 111, then south along NM 111 to its intersection with US 285 north of Ojo Caliente, then east and north along US 285 to its intersection with US 64 at Tres Piedras, then west along US 64 to its intersection with the Tierra Amarilla grant boundary.

GMU 51A and 51B: The dividing line between GMUs 51A and 51B is US 84.

Maps for GMU 51

BLM Maps: Abiquiu Quad, Chama Quad, Taos Quad, and Wheeler Peak Quad.

US Forest Service Maps: Carson National Forest.

These and other maps may be found at NM Public Lands Information Center, (877) 851-8946, or visit <http://plmcenter.org/NM/>.

Hunt ID: 2001-NM-OSBR4AZ-R1B-REL3LAU

Still want to take a DIY Bull elk this year in the 300 plus class 5x5 and 6x6 size mature bull elk?

It is time to Hunt on our side of the fence. Enough of hunting public ground and watching the elk slide onto private land blocking you out and ending your hunt without firing a shot. This is a complete ranch and you will be the only ones hunting on it.

This is a last opportunity to shoot a Bull Elk on a private 5000 acres plus ranch this year the season runs from November 17 to December 31st. The ranch butts up against a large section of BLM land which also has elk but also public hunters. The private ranch you will be hunting is south of Chama near a town Cal Brazos. The elk from Chama migrate to this ranch in the fall and winter to meet a large local herd.

When the hunters are on the BLM land the elk quickly move to this private ranch and stay there. We have all been on the other side of the fence and seen elk move onto private land and we couldn't touch them. In this case you are the one getting the advantage of the elk movement from public to private land. In addition, there is a large local herd that stays on the ranch.

Bull elk sizes range 275 plus but of course how much above 300 must do with your elk hunting skills and of course luck. Traditionally December is a prime month as elk migrate on to the ranch for the winter. Herds in the 100 or so range are common during the month. The landowner was branding cattle last week and saw a herd of 5 bulls 3 or which were well over 300 points B&C Gross. This time of the year the cows are in large herds and the mature bulls are in smaller herds of 3-5 usually. They don't like being with the cows and the screaming kids so they stay with other bulls over 3.5 years old and older.

The area is a prime family owned elk ranch with bulls currently staying on it which is normal. No other Bulls have been taken off it since last year. The ranch is west of Highway 285 and Tres Piedra's ,New Mexico in the northern part of the state where the best elk hunting is located.

GMU 51: Beginning at the intersection of US 64 and the eastern boundary of the Tierra Amarilla grant, running south then west along the Tierra Amarilla grant boundary line to its intersection with the Rio Chama, then south along the Rio Chama to its intersection with the Piedra Lumbre grant boundary line, then northeast along the Piedra Lumbre grant boundary line to its intersection with US 84 northwest of Abiquiu, then southeast along US 84 to its intersection with NM 554 east of Abiquiu, then north and east along NM 554 to its intersection with NM 111, then south along NM 111 to its intersection with US 285 north of Ojo Caliente, then east and north along US 285 to its intersection with US 64 at Tres Piedras, then west along US 64 to its intersection with the Tierra Amarilla grant boundary.

And that tags or vouchers are "ranch tags." You are guaranteed access to this ranch. Instructions for the ranch come from the owner which know the fence lines well and have provided a specific number of elk taken each year in a NM Management program

You can hunt any dates during this season or multiple times during this season. There are only a total of 7 vouchers so those will be the only ones hunting the property.

The hunts are all 5 day hunts. We do it in a way that you can have the benefit of the best hunting dates. As always with elk the worse the weather the better the hunting. A storm coming through gets everything moving, where blue bird weather pushes everything in cover and bedded down. The big

option about this hunt is that you always have a flow of migrants coming down for the winter providing movement.

Here are the hunt dates and prices.

Hunt November 29-03	Arrive 11/28 PM	Leave 12/04/2017	\$ 2795
Hunt December 06-10	Arrive 12/05 PM	Leave 12/11/2017	\$ 2895
Hunt December 13-17	Arrive 12/12 PM	Leave 12/18/2017	\$ 2995
Hunt December 20-24	Arrive 12/19 PM	Leave 12/26/2017	\$ 3095
Hunt December 27-31	Arrive 12/26 PM	Leave 1/1/2018	\$ 3195

Voucher Prices are always favored the later in December that you hunt. December is the coldest and the snowiest month to hunt but with weather to stack your odds the later the better. The biggest bulls usually migrate last but with elk you can only use the word usually because migration and elk is never certain enough to use the word always.

Mike Lollar – Hunt Planner

Web = <http://www.SportsmansLogistics.com>

eMail = HuntingFishing@SportsmansLogistics.com

15596 W. County Rd. 18E

Loveland, CO 80537

970-593-0267